

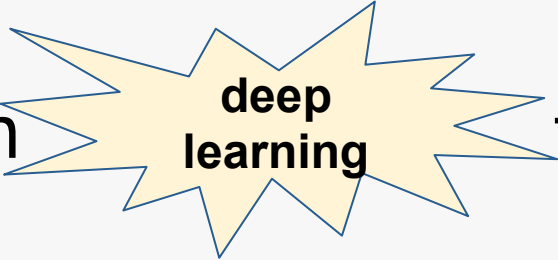
# New Pedagogies for Deep Learning

April 12, 2016

*“The goal of New Pedagogies for Deep Learning is to create compassionate, global citizens who have the ability to **communicate** effectively, **think critically** and collaborate to **create** knowledge and **solve real world problems** in an increasingly complex and **connected** world.”*

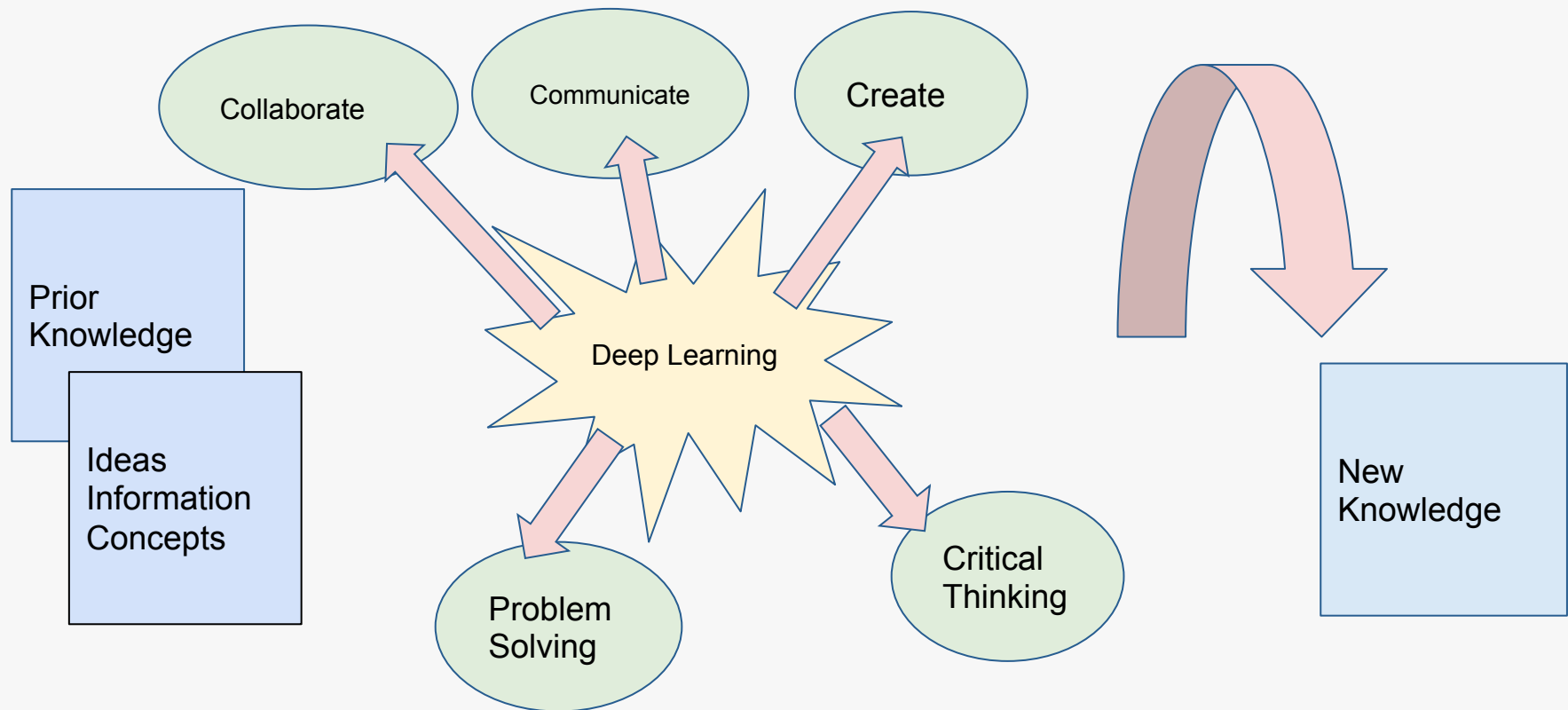
Fullan, M.& Langworthy, M. (2014). A rich seam, page 5

# What?

A global inquiry on designing teaching and learning focused on  that leads to more successful lives for **all** students in an ever-changing, digitally connected world.

# What is “deep learning”?

Deep learning is the **process** by which learners **construct** new knowledge.



# NEW PEDAGOGIES FOR DEEP LEARNING | A GLOBAL RESEARCH PROJECT

metacognition

feedback

collaboration

personalized

innovative/research based

metacognition

feedback

collaboration

transparent

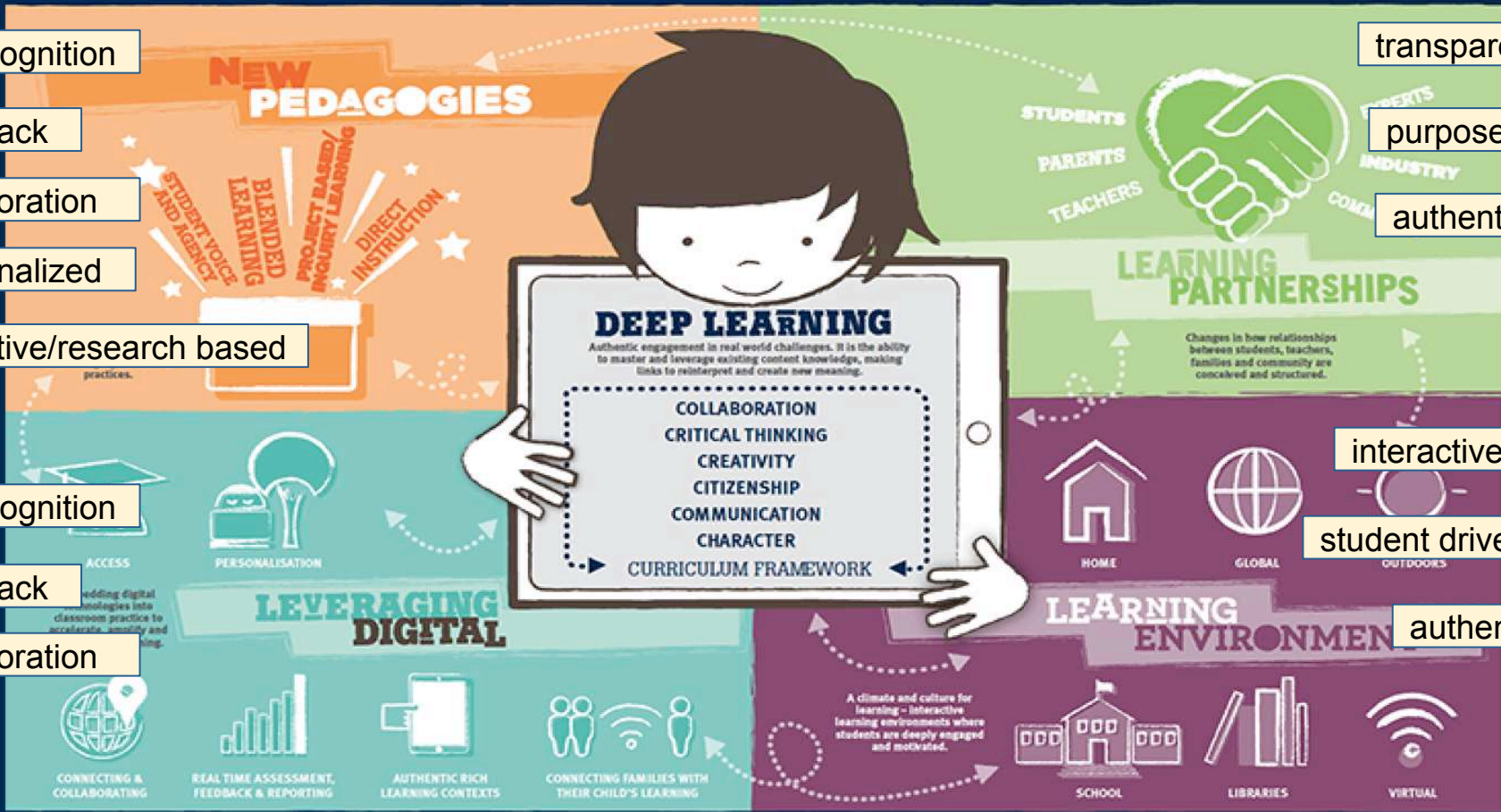
purposeful

authentic

interactive

student driven

authentic



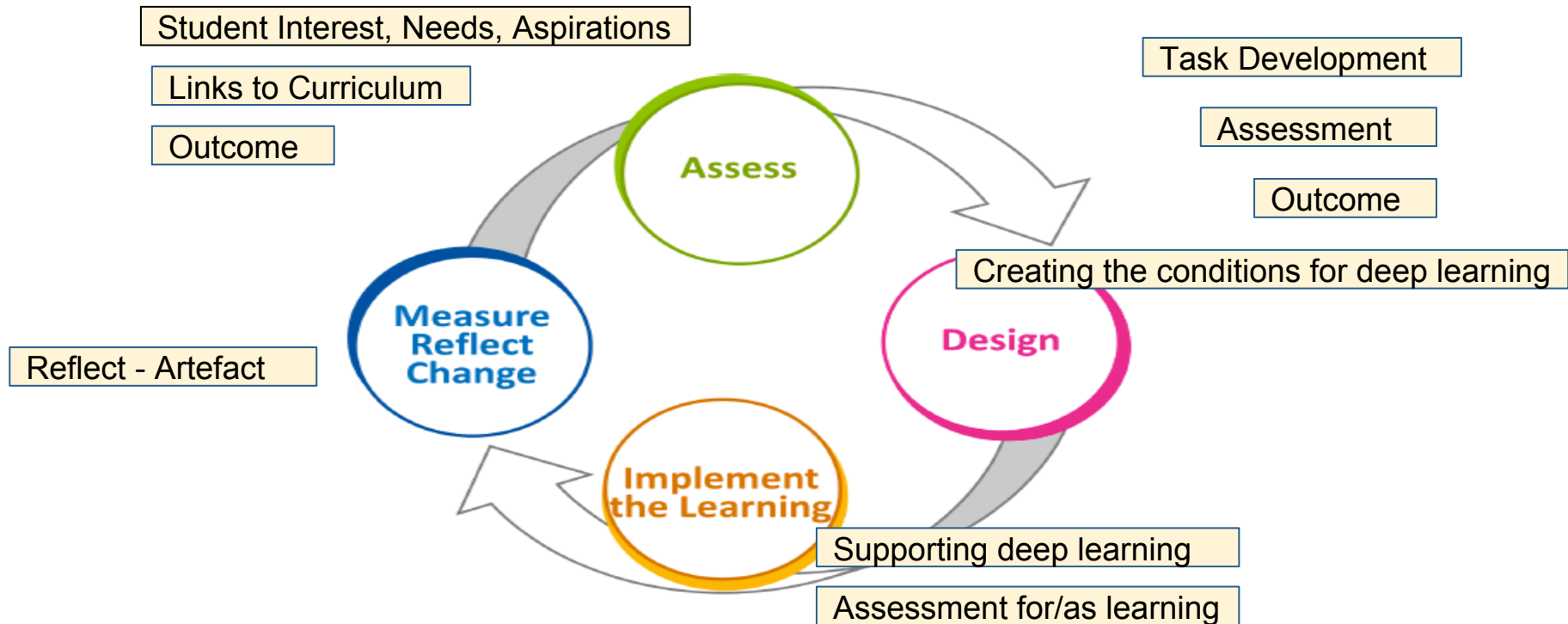
# Shift



Students as passive recipients	Students as partners
Focused on “what” to learn	Focused on “how” to learn
Information recall	Competency development
Learning at school	Life wide learning with real world problems
Limited Innovation	Constant and rapid innovation
Grappling with textbook problems	Grappling with real world problems

Global Cluster	Canadian Cluster	Avon Maitland District School Board
7 countries	13 School Boards (Ontario and Manitoba)	Six participating schools (3 elementary/3 secondary)
<ul style="list-style-type: none"> <li>● Uruguay</li> <li>● Australia</li> <li>● the Netherlands</li> <li>● Finland</li> <li>● New Zealand</li> <li>● United States</li> <li>● Canada</li> </ul>	<ul style="list-style-type: none"> <li>● 67 elementary schools</li> <li>● 16 secondary schools</li> </ul>	<ul style="list-style-type: none"> <li>● Ecole Anne Hathaway</li> <li>● Goderich District Collegiate Institute</li> <li>● Mitchell District High School</li> <li>● North Easthope Public School</li> <li>● North Woods Elementary School</li> <li>● St. Marys Collegiate Vocational Institute</li> </ul>

# Collaborative Inquiry Cycle





## School Based Collaborative Inquiries

1. Ecole Anne Hathaway - Sylvia Cattrysse
2. Goderich District Collegiate Institute - Lorrie Goos
3. Mitchell District High School - Emma Bannerman
4. North Easthope Public School - Erin Cassone
5. North Woods Elementary School - Wendy Armstrong- Gibson
6. St. Marys District Collegiate Vocational Institute - April Smith

## Deep Learning Artefacts

### **Year 1 (2014 - 2015)**

- Two secondary artefacts from AMDSB were selected to represent Canada in the Global cluster

<http://program.yourschools.ca/new-pedagogies/>

### **Year 2 (2015 - 2016)**

- All participants will submit a deep learning artefact
- Learning Fair - June 14, 2016
- Two artefacts will be submitted from AMDSB to be considered for the Global cluster

# Deep Learning Artefact

## Laurie Hayden - GDCI

Goderich District Collegiate Institute

Laurie Hayden & the  
2014 – 2015 English  
2D Class

Humans of New York Inspired Inquiry Task

G.D.C.I.  
vikings

iAM  
education

# Deep Learning Artefact

## Nathan Good - St. Marys DCVI

St. Marys District Collegiate Vocational Institute

Mr. Good and the Grade 11 Environmental Science Class

Do Something!

ST MARYS DCVI  
**SALUKIS**

iAMM  
education

*“Education needs to be radically rethought partly to stop the boredom, but mostly to blow the lid off learning, whereby students and teachers, as active partners, become captivated by education”*

Fullan, M.& Langworthy, M. (2014) A rich seam, page 5

# Does this example meet the goal of NPfDL?

[https://www.youtube.com/watch?v=Gyll4y\\_MRbU](https://www.youtube.com/watch?v=Gyll4y_MRbU)

Scott McLeod, TedX, Des Moines