

# AVON MAITLAND DISTRICT SCHOOL BOARD

*Create Positive, Inclusive Learning Environments, and Maximize Outcomes for Students*

## DIRECTOR'S INFORMATION REPORT

**TO: Regular Board Meeting – Tuesday, May 22, 2018**

**AGENDA ITEM: 6.3 b)**

**SUBJECT: Preliminary Accommodation Analysis Report for 2017/2018**

### 1.0 Background

- 1.1 Board Policy No.15 re *Pupil Accommodation Reviews*, updated pursuant to the Ministry's Revised Pupil Accommodation Review Guideline and approved by the Board in May 2015, requires an annual preliminary analysis of accommodation data, which may include:
  - the Ministry of Education capacity for each school,
  - the level of actual occupancy as a percentage of Ministry of Education capacity,
  - the current and projected enrolment in each school,
  - other information or special circumstances that the Director of Education may deem relevant, and
  - recommendations to the Board regarding which school(s), if any, should be placed under review and the circumstances that support this review.
- 1.2 An accommodation review may result in such changes as: changes to the grades offered in a school, closures, and/or any other practical solutions to overcrowded, underutilized, or inadequate school facilities.
- 1.3 Certain accommodation changes that the Board might contemplate do not require an accommodation review under Board Policy 15. These are found in Section 2.2 of the policy and include enrolment boundary changes where less than 50% of the enrolment of a school is affected, or a school serves as a holding school for the school community where their permanent building is under repair.
- 1.4 Administration contracted with the external firm, Watson & Associates, in 2017 to provide updated 15-year enrolment projections. Administration contracted with Watson & Associates in 2018 to update two specific areas, Listowel and Stratford, to confirm enrolment trends. These projections form the basis of this report. (Appendix A).
- 1.5 In an effort to improve reliability and accuracy of junior kindergarten enrolment projections, staff have been working with local Health Units for the last two years to obtain privacy protected live birth data for each elementary school planning area. Staff provided demographers with live birth data for the purpose of developing incoming kindergarten enrolment projections. The 2017 enrolment projections were the first to benefit, in a preliminary way, from the application of this data. Going forward, we anticipate the ability to develop a share factor based on an accumulated history of comparisons between live births and JK class sizes containing students from the respective birth years. It should be noted that all boards in the province are seeking ways to improve incoming Kindergarten enrolment projections.
- 1.6 For analysis and presentation of enrolments in this report, the 2016/2017 enrolment numbers were designated as the "current year" as these are the most recent audited enrolment numbers. "Year 1", the 2017/2018 enrolment numbers, are based on preliminary, subject to audit, enrolment reports from our schools.

*Engage, Inspire, Innovate ... Always Learning*

- 1.7 Information related to enrolments are expanded in Section 3.0, Appendix B, and Appendix C of this report.
- 1.8 Conclusions which may be drawn from the data are:
  - 1.8.1 Elementary enrolments continue to decline, but at a much slower rate than experienced in the last 10 to 15 years. While elementary enrolments in the very short-term (3 years) are relatively stable on a system-wide basis, at an approximate average of 10,097 students, decline is projected thereafter. Between 2019/2020 and 2024/2025 projections indicate elementary enrolment will reach the lowest point in history, at just under 10,000 students, before recovering slightly to over 10,400 students by 2030/31. If projections were extended beyond the 15-year period, it is expected the elementary panel would indicate stabilization.
  - 1.8.2 While this high-level system-wide analysis would indicate we are past the steep decline experienced over the last decade, some schools continue to exhibit moderate decline in both the short term and long-term projections. These specific areas will be discussed later in the report.
  - 1.8.3 School closures and consolidations undertaken over the past 16 years have resulted in a number of our remaining elementary schools projected to operate at a reasonable capacity for the next 10 to 15 years. Some schools do however remain challenging with regard to both low utilization and small and declining enrollments.
  - 1.8.4 Secondary school enrolments have experienced historical decline with the loss of over 1,200 students between 2010/2011 and 2015/2016. This decline reflects that previously experienced in the elementary panel during the early to mid-2000's. The most significant secondary decline has occurred since 2010/2011. However, moderate but steady decline continues out almost to the end of the 15-year projection. If extended further, the secondary projection would display some recovery already reflected at the end of the 15-year elementary projection.
  - 1.8.5 The placement of grade 7 and 8 students in seven of our secondary schools has, for the most part, sustained the efficient usage of those buildings for the midterm. The Ministry's School Board Efficiencies and Modernization (SBEM) restructuring of grants, in particular the School Foundation Grant, shifted funding away from very small schools that are not isolated and made investments in schools that are larger, remote, or combined.
  - 1.8.6 Significant Top-up Allocation changes, as part of the SBEM restructuring, reflecting underutilization and new criteria regarding proximity to other schools has and will continue to result in a significant decrease in elementary funding across most schools and a decrease at some secondary schools with full implementation in the current year, 2017/2018.
  - 1.8.7 Declines in secondary enrolments will continue to impact the Board's operating revenues in a negative fashion.
  - 1.8.8 Declining enrolments remain our biggest financial challenge. Regardless of changes to the funding formula, our revenue remains directly tied to the number of students within the Board. As enrolment declines, so does revenue. This revenue reduction results in a declining number of teachers, other staff to support

education programs, and the associated resources. As a result, the Board must continue seeking efficiencies in its operations to free up financial resources, which facilitate the achievement of board goals.

1.8.9 Effective with the 2015/2016 SBEM changes, the Declining Enrolment Grant was reduced to encourage school boards to adjust more quickly to declining enrolment. The Declining Enrolment Grant had helped mitigate the effects of enrolment-based revenues shrinking faster than the related expenses.

1.8.10 Declining enrolments challenge the Board's ability to deliver quality education programs to students. In particular, the following issues present themselves with smaller school populations:

- the likelihood of triple grade classes in elementary schools increases;
- the opportunities to have teachers teaching to their area of specialty decrease as the number of staff within a school decreases;
- opportunities for a range of co-curricular activities are reduced as the number of staff members within a school are reduced;
- the pressure to have teaching administrators increases;
- there is an increased need for the sharing of support staff, such as technical resource assistants while their work to support digital learning grows.
- opportunities for staff to collaborate and plan with like grade and like division/department colleagues is reduced or eliminated due to reduced numbers of teaching staff within a school;
- maintaining a range of course offerings in the secondary schools becomes more of a challenge; an expansion of our current use of e-learning and blended learning as well as innovative approaches including interdisciplinary studies and flipped classrooms are all strategies that can be used to sustain the range of offerings.

1.8.11 The Ministry of Education's priority focus on "right sizing" of schools, and related grant changes is pushing boards in the direction of consolidation. Changes in school accommodation must remain an option in the Board's plan to ensure that it is fiscally responsible and accountable and provide the best possible programs for its students.

## 2.0 2017/2018 Review – Issues

Issues that face the Board in making accommodation recommendations at this time are numerous. They include unpredictable finite infrastructure grants dependent on provincial budget constraints. Examples of the unpredictability include the SBEM changes, the 34-credit threshold rule, and the refocusing of capital grants to support government priorities that change over time.

As early as the 2013 Ontario budget, the Ministry signaled significant changes would be required of boards in 'right sizing' schools under the SBEM consultation and boards were first given notice with the 2014/2015 grant release. This approach was fortified with the tandem release of the revised Pupil Accommodation Review Guideline and the 2015/2016 GSNs which implemented a number of grant changes that incited boards to 'right size' schools including the reduction of top-up funding for facilities renewal and operations over three years. Government amendments to grants in response to community reaction around planned consolidations included the introduction, in June 2017, of the Rural and Northern Education Funding Grant for 2107/18 as a means to strengthen rural and northern education. This funding has been renewed for the 2018/19 year.

## 2.1 Guidelines Governing Accommodation Reviews

The Ministry of Education Memorandum 2009: B7 – Revised Pupil Accommodation Review Guidelines (PARG) was released on June 26, 2009 and the Board's required policy was updated accordingly in order to comply with the requirements of this Memorandum. The Board's subsequent preliminary accommodation reviews, up to and including the 2014/2015 review, were conducted in compliance with this updated guideline. The Ministry released Revised Pupil Accommodation Review Guideline on March 26, 2015. Board Policy No.15 was revised to align with this guideline, and approved by the Board in May 2015, following a process of consultation. The subsequent preliminary accommodation reviews up to and including the 2016/2017 review have been conducted in compliance with the Ministry of Education's updated Guideline per Memorandum 2015:B09 – Release of New Pupil Accommodation Review Guideline and Community Planning and Partnerships Guideline.

The Ministry embarked on an extensive consultation to update the Accommodation Review Guideline, releasing the Final Pupil Accommodation Review Guideline on April 28, 2018, now posted on the Ministry's website. Following response to the initial fall 2017 engagement and the second phase of consultations in March 2018, the province made revisions to the PARG which included:

- Additional public meeting(s), which extends timeframes, for a standard pupil accommodation review
- Limiting the use of the shorter, modified pupil accommodation review
- New information requirements for the initial staff report
- Promotion of community input in the pupil accommodation review process and inclusion of student voice
- Streamlining the administrative review process by allowing e-signatures
- Development of ministry supports
- Consideration of elementary student input into the accommodation decision
- Extending the timeframe for the first public meeting from 30 to 40 business days
- Requiring the municipal/community partner meeting to take place prior to the first public meeting.

The ministry will be working with its partner ministries and education and municipal stakeholders to develop templates (including initial staff report and economic impact assessment templates) and other resources before fall 2018 to support boards in conducting pupil accommodation reviews. Until these resources are developed, the moratorium on pupil accommodation reviews will remain in place unless the reviews are related to coterminous board joint use initiatives.

There are no changes currently planned for Community Planning and Partnerships Guideline (CPPG). The ministry will be updating it within the next year. Until then, school boards are expected to continue using the existing CPPG. Given that the guidelines released in April 2018 are not yet operational, the existing Board Policy 15 framework, which is based on the March 2015 Pupil Accommodation Review Guideline, was used in creation of this report.

## 2.2 Changes to Infrastructure/Capital Grants

2.2.1 The Board is at a critical stage in the life cycle of some of its older buildings when upkeep and renewal costs continue to escalate.

2.2.2 Table 1 shows the percent of the Board's buildings at various ages. In summary, as of 2017, 79.3% of the Board's buildings are over 40 years old.

2.2.3 While we have been able to build some new schools and eliminate some older buildings through previous accommodation reviews, it remains that approximately 75.72% of our buildings are now 46 years and older, and significantly costlier to maintain. This is down slightly from the 76.5% reported in the 2015/16 Preliminary Report due to the closing of two older elementary schools in North Perth and opening North Perth Westfield Elementary. It is noted that 18% of gross floor area for board facilities moved into the 51+ year age range as of 2017/2018. The oldest sections of some of our buildings are 91 years old.

2.2.4 Capital funding, as available, is directed toward infrastructure integrity. This is required to preserve safe and comfortable learning environments for staff and students while managing the increased requirements of older buildings. There may be perceptual challenges for the school community as students transition from some of our new elementary facilities to older secondary schools that are well maintained but lack the updated amenities and environment that a new school may provide.

Table 1: Building Ages as of 2017/2018

Age Range	Elementary %	Secondary %	Admin %	Consolidated %
10 or less years	8.90%	0.33%	0.00%	9.24%
11 to 20 years	0.28%	0.13%	0.67%	1.09%
21 to 25 years	2.74%	1.97%	0.00%	4.71%
26 to 30 years	1.21%	0.71%	0.00%	1.92%
31 to 35 years	2.11%	0.00%	0.00%	2.11%
36 to 40 years	1.45%	0.18%	0.00%	1.63%
41 to 45 years	0.68%	2.90%	0.00%	3.58%
46 to 50 years	5.39%	7.62%	0.005%	13.00%
51 plus years	23.48%	38.01%	1.23%	62.72%
Note: Table includes data for sites operational in the 2017-18 school year.				

2.2.5 The most recent internal review of facilities condition occurred in 2014 which continues to inform our capital requirements. More recently, the Ministry of Education had assessors review school conditions at 50% of our sites in October of 2017 and will be reviewing the remainder in October of 2018. This is the 4th such review since 2003 when the Ministry implemented standardized condition reviews and capital reporting across the education sector. These standardized reviews are intended to help boards plan capital work in a 5-year tactical window. In addition, the reviews help the Ministry canvas the Provincial Government for a larger portion of the provincial budget to address the backlog of deferred maintenance as documented by the reviews.

2.2.6 Examples of funding supported by the Ministry reviews include Good Places to Learn (GPL) from 2005 to 2008 as well as fluctuating amounts of School Condition Improvement (SCI) beginning in 2011 with increases more recently based on third-party assessments of school condition. Accountability measures for Ministry reporting have also increased over time.

- 2.2.7 Effective with the 2016/2017 school year, School Condition Improvement funding was allocated in proportion to the renewal needs assessed for each board's facilities during the Ministry's latest Condition Assessment Program.
- 2.2.8 AMDSB's share of the SCI grant increased to approximately \$9.88 million in 2016/2017. For 2017/2018 our SCI allocation is approximately \$6.8 million and projected to be the same in 2018/19.
- 2.2.9 New Greenhouse Gas Reduction Funding was announced April of 2017. This program is in response to the Ontario Government's Climate Change Action Plan that targets Greenhouse Gas Emissions. As such, the program dictates expenditures related to a specific prescribed list of building components that have a direct impact on energy efficiency. This is a time-limited program with finite expenditure deadlines, March 31, 2018 last year and March 31, 2019 for this year's projects. Avon Maitland's portion of the program is projected at \$832,360 for this year.
- 2.2.10 As one of the pillars of School Board Efficiency and Modernization (SBEM), beginning with the 2014/2015 year, the Ministry introduced the four-year School Consolidation Capital (SCC) Program totalling \$750 million, to assist boards in managing their excess capacity and right-sizing their capital footprint. The funding is allocated on a business case basis, using a series of criteria which the Ministry has developed.
- 2.2.11 Since 2014/2015 the Ministry has provided a funding allocation to boards for capacity building to undertaking the necessary planning activities to make more efficient use of space. Referred to as Capital Planning Capacity (CPC), the province wide funding was allocated based on board size and amount of underutilized space being maintained. For 2018/2019 the Ministry is allocating the same amount of provincial funding, targeting the funding toward ensuring boards develop capital plans to effectively manage excess capacity, and identifying and developing potential facility partnership opportunities in addition to data management.
- 2.2.12 In the facilities area, 2017/18 marks the final year of a three-year phase-in of a number of changes tied to SBEM, as follows.

Facility Top-up funding changes include:

- elimination of base top-up, both for School Operations and School Renewal grants
- new definition created for "isolated schools" recognizing that some schools which are isolated from others in the same board need enhanced support
- elementary schools will be supported if 10km or greater distance to next school elementary or secondary school
- secondary schools will be supported if 20km or greater distance to next school secondary school

For full detail related to the SBEM changes refer to Ministry Memo 2015:B07 at this link:

[https://efis.fma.csc.gov.on.ca/faab/Memos/B2015/B7\\_EN\\_AODA.pdf](https://efis.fma.csc.gov.on.ca/faab/Memos/B2015/B7_EN_AODA.pdf).

2.2.13 The Ministry of Education is encouraging boards to achieve 90% occupancy of school buildings. To support this goal boards are asked to seek out “Joint Use of Schools” opportunities with coterminous board partners. Further, the Ministry continues to promote the concept of community hubs, as described in 2016:B09 *Ministry of Education Initiatives to Support Community Hubs in Schools* to use surplus space in schools. Co-location of Ontario Early Years Child and Family Centres is part of the community hub concept. Partnerships, pursuant to the Ministry’s Community Planning and Partnerships Guideline is seen as another method of reducing surplus space in schools. Lastly, funding changes, particularly SBEM, have ensured that boards must look for ways to consolidate their programs to make more efficient use of their existing space. One example of program consolidation undertaken by this board has been the move of Grade 7 and 8 classes into secondary school buildings.

2.3 Recently Received Capital Funding

- 2.3.1 In May of 2018, \$5,135,207.00 in Ministry capital funding for renovations at Stratford Central School was announced. This funding will be augmented by board funds to undertake the demolition of the 1958 wing of the school and construct a smaller addition and features that will address accessibility for the whole building.
- 2.3.2 A community consultation process will be undertaken to gather input on how best to use the secondary and elementary classroom spaces at Stratford Central and Stratford Northwestern to meet the learning needs of students in the Stratford area.
- 2.3.3 It should be noted that one of the criteria for receiving this funding from the Ministry of Education was that the newly renovated structure operates at or over 90% capacity. The staff and trustees will need to keep the 90% operating capacity target in mind as they address future accommodation issues across the district.

**3.0 Enrolments**

3.1 Enrolments – Historical and Projected

These figures are presented as “students” as opposed to Average Daily Enrolments which is a change from reports previous to 2013. The use of students recognizes the fact that Avon Maitland experiences very few changes in elementary enrolments throughout the school year, which the Average Daily Enrolment calculation is designed to capture. However, the caution is that for financial purposes, the ADE calculation yields different numbers much less that the secondary student bodies, particularly as impacted by part time secondary students and the 34-credit factor.

3.1.1 Table 2 shows 7-year historical data for elementary and secondary enrolments.

Table 2: 7-Year Historical Enrolments

Panel	Current -6 2010/ 2011	Current -5 2011/ 2012	Current -4 2012/ 2013	Current -3 2013/ 2014	Current -2 2014/ 2015	Current -1 2015/ 2016	Current 2016/ 2017	% Change 2010 to 2016
Elementary	10729	10499	10272	10251	10221	10011	10073	-6.1%
Secondary	6683	6356	6191	5916	5709	5477	5338	-20.1%

- 3.1.2 Over the previous 7-year period, enrolments have declined by 6.1% in the elementary panel and 20.1% in the secondary panel.
- 3.1.3 Table 2 indicates secondary enrolment declined by approximately just over 1300 students between 2010/2011 and 2016/2017. As the smaller elementary cohorts graduate, the total decline in secondary occurs over a compressed period. We would note that declines for the district may not reflect individual patterns in each planning area.
- 3.1.4 In 2016/2017, the secondary panel experienced a decline of more than 130 students, compared to prior year actuals, resulting in a total secondary enrolment of 5338 for the district.
- 3.1.5 Table 3 shows the most current 10-year enrolment projections as prepared by Watson and Associates.

Table 3: 10-Year Enrolment Projections

Year	Current 2016/ 2017	Year 1 2017/ 2018	Year 2 2018/ 2019	Year 3 2019/ 2020	Year 4 2020/ 2021	Year 5 2021/ 2022	Year 6 2022/ 2023	Year 7 2023/ 2024	Year 8 2024/ 2025	Year 9 2025/ 2026	Year 10 2026/ 2027
Elementary	10073	10175	10108	10072	9987	9962	9965	9943	9998	10071	10073
Secondary	5338	5068	5128	5077	5090	5090	5101	5107	5002	4927	4810

- 3.1.6 Elementary enrolments are projected to stabilize by about 2020/2021. Increases in enrolment appear to begin in the 2024/2025 school year with an estimated growth of 1.3% from 2024 to 2026. Despite this growth, enrolments are projected to remain less than the previous elementary panel projections.
- 3.1.7 Secondary enrolments continue to decline over the fifteen (15) year projection and remain less than the previous secondary projections. Most of the decline experienced in the elementary panel will have taken place in the secondary panel by 2019; however, there appears to be a second wave of decline beginning in 2025.
- 3.1.8 Trends either historical or projected by the system-wide enrolment numbers may not reflect trends in each planning area or individual school.

### 3.2 School Rated Capacities and Loadings

- 3.2.1 In 2013/2014 a revision was made to the rated capacities for schools when the Ministry of Education changed the loading for Kindergarten classrooms to 26 pupils. Application of this revised loading to our schools resulted in an increase of rated capacities (OTG) for our K-6 and K-8 schools. At the same time, staff reviewed the classification of rooms in some schools designated for vocal/instrumental music resulting in some small changes to the overall rated capacity for the schools in question.
- 3.2.2 The Ministry reports elementary and secondary enrolment and school capacity separately in most systems. This is required to differentiate funding calculations and other unique benchmarks that distinguish the elementary and secondary panels from each other. This fact requires special consideration when making



changes to Ministry data for 7-12 sites where elementary and secondary are accommodated together.

- 3.2.3 In 2016/2017, staff reviewed the allocation of space at seven (7) sites where grade 7-12 (elementary/secondary) is accommodated together in one building. Space allocation was adjusted to shift excess capacity out of the 7/8 panel to the secondary panel at the seven (7) sites. This shift will affect school utilizations in Appendix B-1, B-2.1, B-2.2, and B-3 as well as the capacity tables in Section 4 when compared to reports prior to 2015/16.
- 3.2.4 Elementary and secondary space utilizations are somewhat unique where secondary space contains more specialized space and elementary is primarily standard classrooms. However, to fully understand utilization at the seven (7) sites where grade 7-12 configuration exists, it is helpful to combine the elementary and secondary enrolment and capacities for analysis. Section 4 contains tables to assist in the analysis of excess capacity at these locations.
- 3.2.5 A school's overall enrolment and loading has been used as a guide for placing schools on a watch list. Kindergarten to Grade 8 schools with fewer than one hundred and fifty (150) pupils and/or a percentage loading of 60% or less (Ministry of Education's 1979 Capital Grant Program) are considered less sustainable from a program delivery and financial perspective. More recently the Ministry is referencing a utilization of equal to or less than 65% to drive Capital Planning Capacity allocations. This is purely a district wide funding calculation and does not determine, necessarily, where accommodation efficiencies are best sought.
- 3.2.6 Appendices B-1, B-2.1, B-2.2, and B-3 show the individual schools, the projected Average Daily Enrolments for 2017/2018, each school's 2017/2018 rated capacity, and the percentage loading.
- 3.2.7 Appendix B-1 shows the alphabetical listing. The combined loading of the elementary schools is projected to be 80.60% leaving a theoretical 2451 available pupil places. The combined loading in the secondary panel is projected to be 64.59% leaving a theoretical 2779 available pupil places.
- 3.2.8 Appendix B-2.1 shows the schools listed in ascending order of enrolments. In the elementary panel there are:
- two (2) K-6 and K-8 schools with enrolments at 150 or fewer,
  - seven (7) K-6 and K-8 schools with enrolments between 150 and 200,
  - seven (7) K-6 and K-8 schools with enrolments between 200 and 300,
  - fourteen (14) K-6 and K-8 schools between 300 and 613 students.
- These numbers demonstrate the impact of the recent consolidations when compared to prior preliminary accommodation reports.
- 3.2.9 Appendix B-2.1 also shows there is:
- four (4) secondary schools with enrolment below 450 students,
  - two (2) secondary schools with enrolment between 450 and 700 students,
  - three (3) secondary schools with enrolment between 701 and 875 students.
- 3.2.10 In response to a Trustee request following the 2015/2016 report, an additional Appendix B2.2 organized by enrolment and grouped by school configurations K-6, K-8, 7/8, 7-12, and 9-12 has been created.

3.2.11 Appendix B-3 shows the schools listed by percentage loading. In the elementary panel there are:

- two (2) K-6 and K-8 schools under 50%,
- five (5) K-6 and K-8 schools between 50% and 65%,
- six (6) K-6 and K-8 schools between 65% and 75%,
- six (6) K-6 and K-8 schools between 75% and 85%,
- nine (9) K-6 and K-8 schools between 85% and 100%,
- two (2) remaining K-6 and K-8 schools are over 100%.

3.2.12 Appendix B-3 also shows:

- two (2) secondary schools under 60%,
- five (5) secondary schools between 60% and 70% loading,
- two (2) secondary school over 70% loading.

3.2.13 From Appendix B-3, Bluewater Coast PS, South Perth Centennial PS, Central Perth PS have loadings below 60%. Bluewater Coast ES was part of the 2010/2011 Accommodation Review. We continue to look for opportunities and keep communication open with Municipalities, our most likely candidate for a community partner that may be interested in using excess capacity and is willing to pay rent to cover operating and maintenance costs, per the Ministry's direction.

3.2.14 South Huron D.H.S. and Central Huron SS have the lowest loadings of secondary schools in our district with utilization under 60%.

3.2.15 Appendix C has been added to the report as of the 2015/16 year. It summarizes the change in enrolment projections at the five (5) and ten (10) year mark.

#### 4.0 Review of Enrolment by Planning Area

4.1 Deciding to undertake an accommodation review in a community or series of communities must be based on many different factors. They may include:

4.1.1 Current and projected enrolment of the schools in relation to school rated capacity.

4.1.2 Schools with a lower number of students, which leads to staffing and programing challenges in particular.

4.1.3 Condition of building infrastructure (including accessibility for persons with disabilities), and anticipated costs to maintain the buildings.

4.1.4 The ability of trustees and staff to adequately supply information during an accommodation review to communities, as needed, where multiple communities are identified.

4.2 Recommendations for the establishment of an Accommodation Review Committee may involve schools from more than one planning area.

4.3 In reviewing the data for all schools in the Board, some of the following areas present ongoing concerns. **We are not, however, recommending formal reviews in any of these areas this year; some areas not identified may be subject to formal reviews in the future.** This does not preclude community consultations that may be required regarding other less disruptive accommodation adjustments over the next year.

Note: The historical enrolments reported below are based on school configurations that existed in each school year. Projected enrolments take into account the newly consolidated school configurations as they currently exist.

#### 4.4 Stratford Area

4.4.1 Table 4 shows the historic enrolment trends for schools in the Stratford area. They are Anne Hathaway PS, Avon PS, Bedford PS, Central Perth PS, Downie PS, Hamlet PS, Milverton PS, North Easthope PS, Romeo PS, Shakespeare PS, Sprucedale PS, Stratford Central PS, Stratford Northwestern PS, Stratford Central SS and Stratford Northwestern SS.

Table 4: Historic Enrolment, Stratford Area

School	Current -6 2010/ 2011	Current -5 2011/ 2012	Current -4 2012/ 2013	Current -3 2013/ 2014	Current -2 2014/ 2015	Current -1 2015/ 2016	Current 2016/ 2017	% Change 2010 to 2016
Anne Hathaway Public School	412	374	364	392	385	390	390	-5.3%
Avon Public School	253	272	287	287	310	304	323	27.6%
Bedford Public School	464	495	462	387	414	425	440	-5.3%
Central Perth Elementary School	259	247	238	237	233	217	233	-10.0%
Downie Central Public School	282	270	275	272	280	271	261	-7.4%
Hamlet Public School	244	218	224	217	206	194	184	-24.6%
Milverton Public School	258	256	266	277	270	275	296	14.9%
North Easthope Public School	146	159	153	160	152	151	158	8.4%
Romeo Public School	131	134	143	160	158	145	144	9.9%
Shakespeare Public School	207	197	202	197	186	186	184	-11.1%
Sprucedale Public School	221	214	213	204	213	213	203	-8.3%
Stratford Central Public School	275	277	278	299	309	302	311	13.1%
Stratford Central Secondary School	790	807	812	805	793	789	803	1.6%
Stratford Northwestern Public School	234	207	155	184	206	167	156	-33.3%
Stratford Northwestern Secondary School	999	945	947	937	904	902	872	-12.7%

Note: Historical enrolment trends for some sites have been affected by accommodation changes. Avon PS, Anne Hathaway PS, and Bedford PS had boundary adjustments in 2013/2014.

4.4.2 Table 5 shows the projected enrolments for the Stratford area.

Table 5: Projected Enrolments, Stratford Area

School	Current 2016/ 2017	Year 1 2017/ 2018	Year 2 2018/ 2019	Year 3 2019/ 2020	Year 4 2020/ 2021	Year 5 2021/ 2022	Year 6 2022/ 2023	Year 7 2023/ 2024	Year 8 2024/ 2025	Year 9 2025/ 2026	Year 10 2026/ 2027
Anne Hathaway Public School	390	396	420	433	430	428	419	430	426	430	427
Avon Public School *	323	320	357	361	356	359	362	364	366	374	380
Bedford Public School	440	452	437	429	437	446	450	459	462	456	464
Central Perth Elementary School	233	219	213	212	198	190	182	187	186	186	187
Downie Central Public School *	261	243	214	204	201	197	191	188	188	194	200
Hamlet Public School	184	189	184	171	163	159	157	165	163	165	168
Milverton Public School	296	303	295	293	278	283	275	266	261	261	257
North Easthope Public School	158	164	163	160	150	147	142	135	137	137	136
Romeo Public School	144	140	132	132	127	121	121	122	124	126	125
Shakespeare Public School	184	187	185	185	188	185	185	182	182	189	187
Sprucedale Public School	203	205	190	192	189	190	189	187	186	179	177
Stratford Central Public School	311	290	297	293	299	307	307	283	276	287	281
Stratford Central Secondary School	803	784	845	801	811	777	782	792	795	779	760
Stratford Northwestern Public School	156	159	169	180	182	190	190	185	186	191	193
Stratford Northwestern Secondary School	872	784	808	757	749	790	785	797	777	774	746

\* Projections for these sites is based on prior year's projections with estimated adjustments to account for boundary adjustments and growth.

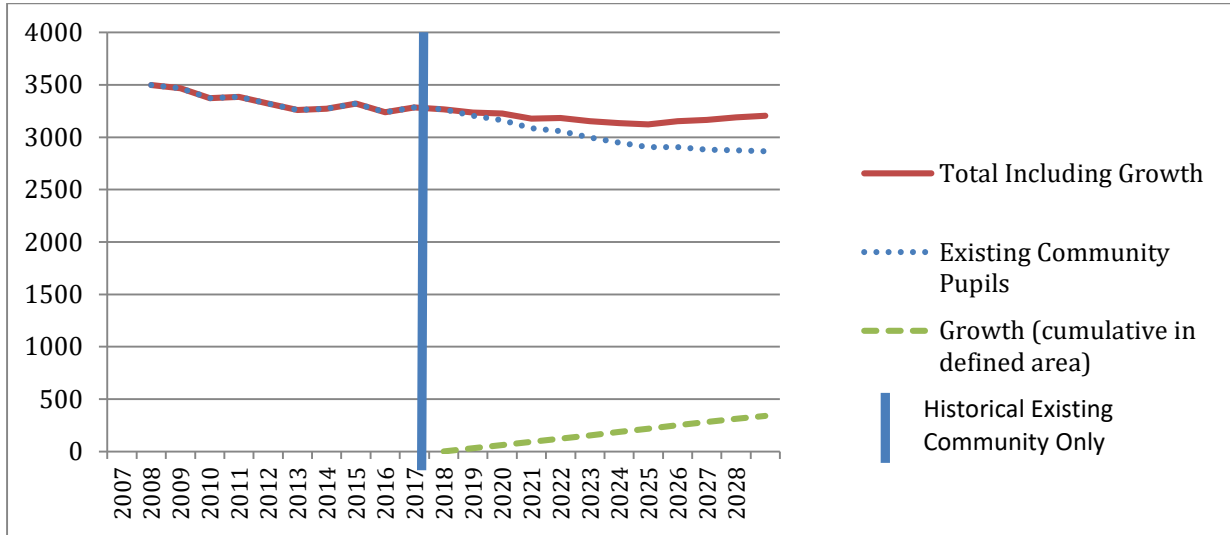
4.4.3 Table 6 shows the school rated capacities, enrolments, and loadings for the 2016/2017 school year.

Table 6: School Rated Capacity, Enrolment Projections, Loadings, Stratford Area

School	SFIS Rated Capacity 2017-18 (OTG)	Enrolment Projection Students 2017-18	% Loading 2017-18
Anne Hathaway Public School	542	396	73.1%
Avon Public School	377	320	84.9%
Bedford Public School	449	452	100.7%
Central Perth Elementary School	371	219	59.0%
Downie Central Public School	268	243	90.7%
Hamlet Public School	305	189	62.0%
Milverton Public School	386	303	78.5%
North Easthope Public School	268	164	61.2%
Romeo Public School	233	140	60.1%
Shakespeare Public School	282	187	66.3%
Sprucedale Public School	236	205	86.9%
Stratford Central Public School	322	290	90.1%
Stratford Central Secondary School	777	784	100.9%
Stratford Northwestern Public School	161	159	98.8%
Stratford Northwestern Secondary School	1251	784	62.7%
Stratford Central 7-12 Consolidated Capacity	1099	1074	97.7%
Stratford Northwestern 7-12 Consolidated Capacity	1412	943	66.8%

4.4.4 Table 7 – Demonstrates the dynamic between projected enrolment in the existing community and the enrolment generated by growth areas. It becomes evident the decline of students residing in the existing communities historically outpaced any increase in enrolment from growth areas. Future projections indicate that growth and decline are now stable and balance each other.

Table 7: Stratford Planning Area (Elementary) - Existing Community vs Growth Community



4.4.5 From 1999 until 2004, the Accommodation Reviews in the city of Stratford resulted in the closure of five (5) schools: Portia ES, Falstaff PS, Juliet PS, King Lear PS and the former Avon PS with a resulting reconfiguration to create Stratford Northwestern PS and Stratford Central PS for grades 7 and 8 and relocate Avon PS to a new site. The net effect was the reduction of some 972 pupil places.

4.4.6 The 2011/2012 accommodation review undertaken in Stratford resulted in the establishment of a second dual track French Immersion School at Anne Hathaway PS and the adjustment of boundaries for Avon PS, Bedford PS and Anne Hathaway PS. These changes were implemented in the 2013/2014 school year. Further boundary changes to continue balancing the French Immersion enrolment are to be implemented effective in 2018/2019.

4.4.7 Housing developments continue in the northwest area of Stratford (adjacent to Stratford Northwestern SS) as well as in the southwest which has been resulting in some new enrolment for the area.

4.4.8 The area currently under development is bounded by Briarhill Drive, Line 36, O’Loane Avenue and the northwest boundary for Bedford PS and it was originally within the Central Perth PS attendance area. In June 2013, Trustees adjusted boundaries in this area to have it become part of the Avon PS catchment. Further boundary adjustments west of O’Loane will be monitored and considered in the future to align areas annexed to the city of Stratford.

4.4.9 North Easthope PS enrolment is projected to continue to decline slightly over the next ten (10) years which will bring the enrolment under 150 pupils and the loading below 60%.

- 4.4.10 Central Perth PS, currently operating at 59.0% capacity, is also projected to continue to decline, with a 19% projected decrease in enrolment at the end of ten (10) years. The corresponding loading at that time is projected to be 50.4%.
- 4.4.11 Secondary enrolment in Stratford trends slightly different than previous projections indicated. Stratford Central is projected to fluctuate between 775 and 803 students for the next nine (9) years and then experience a gradual decline in enrolment over the following six (6) years. Stratford Northwestern had previously indicated a slight upward trend. The new projection indicates Stratford Northwestern Secondary enrolment slowly declines out to the end of the projection period. This may be a reflection of the historical trend (Table 4) observed at Stratford Central Elementary where it trended upwards while Stratford Northwestern trended down. We see some reversal in this trend in the projection, but as there is somewhat open movement between the two sites for students in the Stratford planning area the trend is less reliable.
- 4.4.12 There are six elementary schools configured K-6 in the city of Stratford comprised of four English and two dual track French immersion sites. Boundary adjustments mentioned in 4.4.5 had been made to accommodate the growth area at the northwest end of Stratford and to balance the French/English enrolments at both FI sites. At that time, staff indicated future boundary adjustments may be necessary to manage enrolment pressures and balance French/English streams at the FI schools. This dynamic remains today, as another boundary change comes into effect for 2108/19 and Bedford projections indicate the requirement for future consideration of further boundary changes..
- 4.4.13 Projections for the FI sites show steady growth with Bedford experiencing some enrolment pressure with a current loading of 100.7%. It is projected to remain close to or slightly over capacity for the next ten (10) years. Anne Hathaway has a loading of 73.1% and will stay within its capacity for the next ten (10) years.
- 4.4.14 Avon PS has a loading of 84.9% in 2017/2018; however, given recent boundary changes to take effect in 2018/2019, it will experience an increase of 11.5% in the short term. Additional new enrollment from development areas will generate an increase of 4.6% over the next ten (10) years. Portable(s) will be necessary in the short term to accommodate the increased enrolment.
- 4.4.15 Downie Central PS is loaded at 90.7% for 2017/2018. Recent boundary adjustments taking effect in 2018/2019 will reduce the enrolment by 16% in the short term and then stabilize at around 200 students. This should allow the removal of older portables at this site that are reaching the end of their useful life.
- 4.4.16 Staff will continue to monitor these sites to determine if future adjustments are required.
- 4.4.17 Hamlet, Romeo, and Shakespeare Public Schools have utilization rates in the low 60% range and are not projected to see any increases. Romeo PS and Shakespeare PS have lower enrolment capacities at 233 and 282 OTG respectively. In addition, Romeo and Shakespeare have limited property, which results in less flexibility in any future consolidation considerations.

#### 4.5 South Perth Area

4.5.1 Table 8 shows the historic enrolment trends for the South Perth schools: Little Falls PS, South Perth Centennial PS, St. Marys DCVI - Elementary and St. Marys DCVI.

Table 8: Historical Enrolments, South Perth Area

School	Current -6 2010/ 2011	Current -5 2011/ 2012	Current -4 2012/ 2013	Current -3 2013/ 2014	Current -2 2014/ 2015	Current -1 2015/ 2016	Current 2016/ 2017	% Change 2010 to 2016
Little Falls Public School	475	480	486	507	503	498	481	n/a
South Perth Public School	189	177	174	163	158	159	166	-11.9%
St. Mary's DCVI - Elementary	88	112	123	120	125	133	129	n/a
St. Marys D.C. & V.I.	571	512	470	464	446	434	448	-21.9%

4.5.2 Table 9 shows the enrolment projections for the South Perth area.

Table 9: Projected Enrolments, South Perth Area

School	Current 2016/ 2017	Year 1 2017/ 2018	Year 2 2018/ 2019	Year 3 2019/ 2020	Year 4 2020/ 2021	Year 5 2021/ 2022	Year 6 2022/ 2023	Year 7 2023/ 2024	Year 8 2024/ 2025	Year 9 2025/ 2026	Year 10 2026/ 2027
Little Falls Public School	481	462	450	433	427	434	444	449	461	474	490
South Perth Public School	166	156	150	156	154	149	141	139	139	140	138
St. Mary's DCVI - Elementary	129	147	140	130	139	121	114	125	124	119	119
St. Marys D.C. & V.I.	448	421	434	473	458	451	472	432	433	420	391

4.5.3 Table 10 shows the school rated capacities, enrolments, and loadings for the 2016/2017 school year.

Table 10: School Rated Capacity, Enrolment Projections, Loadings, South Perth Area

School	SFIS Rated Capacity 2017-18 (OTG)	Enrolment Projection Students 2017-18	% Loading 2017-18
Little Falls Public School	498	462	92.8%
South Perth Public School	337	156	46.3%
St. Mary's DCVI - Elementary	138	147	106.5%
St. Marys D.C. & V.I.	651	421	64.7%
St. Marys D.C. & V.I. - 7-12 Consolidated Capacity	789	568	72.0%



- 4.5.4 Enrolment at Little Falls PS is projected to be relatively stable over the next ten (10) years. The school is currently operating at capacity. There is capacity to add rooms to the existing building. Currently there are two portables on site to preserve resource spaces in the school.
- 4.5.5 Enrolment at St Marys DCVI - Elementary is projected to decline slightly over the next 10 years before returning to current levels at the end of the fifteen (15) year projection.
- 4.5.6 Enrolment at South Perth Centennial PS is expected to continue declining slightly over the next ten (10) years. This school is currently operating at 46.3% capacity, down from 49.3% last year.
- 4.5.7 The enrolment at St Marys DCVI is projected to fluctuate between 400 and 470 over the next ten years. Beyond the 15-year projection we would expect the enrolment to stabilize at just under 400 students.

#### 4.6 West Perth Area

- 4.6.1 Table 11 shows the historic enrolment trends for Mitchell PS, Upper Thames ES and Mitchell DHS.

Table 11: Historical Enrolments, West Perth Area

School	Current -6 2010/ 2011	Current -5 2011/ 2012	Current -4 2012/ 2013	Current -3 2013/ 2014	Current -2 2014/ 2015	Current -1 2015/ 2016	Current 2016/ 2017	% Change 2010 to 2016
Upper Thames Public School	794	802	799	596	584	571	571	-28.1%
Mitchell DHS - Elementary				162	164	137	150	n/a
Mitchell District High School	427	384	374	338	323	314	292	-31.6%

Note: Historical enrolment trends for some sites have been affected by accommodation changes. Upper Thames PS historical enrolment affected by the closure of Mitchell PS in 2010/2011 and the movement of 7/8's to Mitchell DHS in 2013/2014.

- 4.6.2 Table 12 shows the enrolment projections for the West Perth area.

Table 12: Projected Enrolments, West Perth Area

School	Current 2016/ 2017	Year 1 2017/ 2018	Year 2 2018/ 2019	Year 3 2019/ 2020	Year 4 2020/ 2021	Year 5 2021/ 2022	Year 6 2022/ 2023	Year 7 2023/ 2024	Year 8 2024/ 2025	Year 9 2025/ 2026	Year 10 2026/ 2027
Upper Thames Public School	571	613	554	540	546	550	563	581	584	604	613
Mitchell DHS - Elementary	150	142	142	157	141	134	137	127	134	134	131
Mitchell District High School	292	300	308	283	295	298	282	292	280	264	271

Table 13 shows the school rated capacities, enrolments, and loadings for the 2016/2017 school year.

Table 13: School Rated Capacity, Enrolment Projections, Loadings, West Perth Area.

School	SFIS Rated Capacity 2017-18 (OTG)	Enrolment Projection Students 2017-18	% Loading 2017-18
Upper Thames Public School	735	613	83.4%
Mitchell District HS – Elementary	161	142	88.2%
Mitchell District High School	495	300	60.6%
Mitchell District High School 7-12 Consolidated Capacity	656	442	67.4%

- 4.6.4 Upper Thames ES and Mitchell PS were consolidated at the Upper Thames ES site as a result of an accommodation review during the 2007/2008 school year. The school's new configuration was effective with school start-up in September 2010.
- 4.6.5 The implementation of full day kindergarten at Upper Thames ES took place at the start of the 2014/2015 school year. Grade 7 and 8 students were moved to Mitchell DHS starting September 2013 to make way for renovations at Upper Thames ES and at the same time make more efficient and effective use of the available space at Mitchell DHS.
- 4.6.6 Enrolment at Mitchell DHS for Grades 9 to 12 shows slight decline over the next ten (10) years. Some growth is projected for Upper Thames ES over the same time frame which should translate to an upward trend at Mitchell DHS – Elementary and Mitchell DHS beyond the fifteen (15) year projection.

#### 4.7 North Perth

4.7.1 Table 14 shows the historic enrolment trends for Elma Township PS, Listowel Central PS, Listowel Eastdale PS, Mornington Central PS, Grey Central PS, Wallace PS, and Listowel DSS.

Table 14: Historical Enrolments, North Perth Area

School	Current -6 2010/ 2011	Current -5 2011/ 2012	Current -4 2012/ 2013	Current -3 2013/ 2014	Current -2 2014/ 2015	Current -1 2015/ 2016	Current 2016/ 2017	% Change 2010 to 2016
Elma Township Public School	450	426	431	438	441	385	345	-23.3%
Listowel Central Public School (Closed effective 2016/17)	355	364	376	376	386	394		n/a
Listowel Eastdale Public School	231	229	239	253	249	252	286	23.8%
Mornington Central Public School	182	175	153	141	148	116	131	-28.0%
North Woods Elementary School	163	144	185	204	186	161	168	3.1%
Wallace Public School (Closed effective 2016/17)	238	231	213	191	175	151		n/a
Listowel District Secondary School	1,044	1,005	976	920	904	864	887	-15.0%

Note: Historical enrolment trends for some sites have been affected by accommodation changes. Elma PS affected by closure of Brussels PS and movement of 7/8's to Elma PS and FE Madill SS starting 2010/2011.

4.7.2 Table 15 shows the enrolment projections for the North Perth area.

Table 15: Projected Enrolments, North Perth Area

School	Current 2016/ 2017	Year 1 2017/ 2018	Year 2 2018/ 2019	Year 3 2019/ 2020	Year 4 2020/ 2021	Year 5 2021/ 2022	Year 6 2022/ 2023	Year 7 2023/ 2024	Year 8 2024/ 2025	Year 9 2025/ 2026	Year 10 2026/ 2027
Elma Township Public School	345	344	323	330	317	321	329	327	338	336	348
Listowel Eastdale Public School	286	285	293	302	292	302	307	319	320	334	345
Mornington Central Public School	131	171	186	182	180	183	179	177	173	167	166
North Perth Westfield Elementary School	546	571	577	578	579	568	573	576	577	583	584
North Woods Elementary School	168	166	154	153	159	156	159	158	162	167	171
Listowel District Secondary School	887	875	880	875	845	847	834	862	853	835	841

4.7.3 Table 16 shows the school rated capacities, enrolments, and loadings for the 2016/2017 school year.

Table 16: School Rated Capacity, Enrolment Projections, Loadings, North Perth Area

School	SFIS Rated Capacity 2017-18 (OTG)	Enrolment Projection Students 2017-18	% Loading 2017-18
Elma Township Public School	478	344	72.0%
Listowel Eastdale Public School	285	285	100.0%
Mornington Central Public School	199	171	85.9%
North Perth Westfield Elementary School	629	571	90.8%
North Woods Elementary School	259	166	64.1%
Listowel District Secondary School	1200	875	72.9%

4.7.4 An Accommodation Review conducted in this area during the 2009/2010 school year resulted in a decision to close Brussels PS and direct its JK-6 students to attend North Woods ES and Maitland River ES. Grade 7 and 8 students from Brussels PS and North Woods ES were accommodated at either FE Madill SS or Elma Township PS based on their secondary attendance area. Further, a decision was made to seek capital funding to replace both Listowel Central PS and Wallace PS with a new JK-8 school. That funding was confirmed in June 2011 and a new school, North Perth Westfield was opened at the start of the 2016/17 school year. While North Woods ES enrollment initially declined following this review, its numbers show a stable projection between 160 and 180 students. In addition, it is seen as an important property for outdoor space.

4.7.5 Past projections showed Elma Township PS to maintain a utilization rate better than 70%. New data indicates that it will decline further over the next five (5) years reaching a low utilization of close to 65% before enrolment starts to pick up.

4.7.6 The enrolment projection for Mornington Central PS is expected to fluctuate slightly over the next ten (10) years. During the 2015/2016 school year, the grade configuration of Mornington Central was changed from a K-6 to a K-8. The enrolment at this school tends to fluctuate significantly over the course of the school year due to family moves; this tendency may have an impact on the projected enrolments for this school. Another complicating factor for projecting enrolments, unique to this school, is the fact that families in the Mornington area tend to register their children in the Senior Kindergarten or Grade 1 year as opposed to the Junior Kindergarten year.

4.7.7 North Perth Westfield ES is projected to be stable in the five (5) year timeframe before showing an increase by the end of the fifteen (15) year projection. North Perth Westfield is projected to exceed its built capacity towards the end of the fifteen (15) year projection.

4.7.8 Listowel Eastdale PS enrolment trends upwards through to the end of the fifteen (15) year projection, going beyond its capacity in the next one to two years. Boundary adjustments may be required to take advantage of capacity at North Perth Westfield ES in the short term.

4.8 Central Huron Area

4.8.1 Table 17 shows the historic enrolment trends for Blyth PS, Clinton PS, Holmesville PS, Hullett Central PS, Huron Centennial PS, Seaforth PS and Central Huron SS.

Table 17: Historical Enrolments, Central Huron Area

School	Current -6 2010/ 2011	Current -5 2011/ 2012	Current -4 2012/ 2013	Current -3 2013/ 2014	Current -2 2014/ 2015	Current -1 2015/ 2016	Current 2016/ 2017	% Change 2010 to 2016
Clinton Public School	239	208	211	276	275	297	296	23.8%
Hullett Central Public School	157	161	265	284	280	282	285	81.8%
Huron Centennial Public School	377	360	341	366	357	327	337	-10.5%
Seaforth Public School	318	338	314	297	300	295	306	-3.8%
Central Huron Secondary School	646	600	610	568	565	530	490	-24.1%
Blyth Public School (Closed)	157	154						n/a
Holmesville Public School (Closed)	129	108	103					n/a

Note: Historical enrolment trends for some sites have been affected by accommodation changes. Clinton PS was affected by the closure of Holmesville PS in 2012/13. Hullett PS was affected by the closure of Blyth PS in 2012/2013. Seaforth was marginally affected by the closure of Brussels PS in 2012/2013.

4.8.2 Table 18 shows the projected enrolments for the Central Huron area.

Table 18: Projected Enrolments, Central Huron Area

School	Current 2016/ 2017	Year 1 2017/ 2018	Year 2 2018/ 2019	Year 3 2019/ 2020	Year 4 2020/ 2021	Year 5 2021/ 2022	Year 6 2022/ 2023	Year 7 2023/ 2024	Year 8 2024/ 2025	Year 9 2025/ 2026	Year 10 2026/ 2027
Clinton Public School	296	296	306	302	287	285	281	274	270	271	274
Hullett Central Public School	285	271	272	275	275	281	282	282	289	295	293
Huron Centennial Public School	337	352	332	339	334	330	343	349	348	353	356
Seaforth Public School	306	304	310	308	302	295	297	296	297	297	297
Central Huron Secondary School	490	461	441	445	464	477	472	484	469	450	449

4.8.3 Table 19 shows the school rated capacities, enrolments, and loadings for the 2016/2017 school year.

Table 19: School Rated Capacity, Enrolment Projections, Loadings, Central Huron Area

School	SFIS Rated Capacity 2017-18 (OTG)	Enrolment Projection Students 2017-18	% Loading 2017-18
Clinton Public School	305	296	97.0%
Hullett Central Public School	259	271	104.6%
Huron Centennial Public School	424	352	83.0%
Seaforth Public School	400	304	76.0%
Central Huron Secondary School	879	461	52.4%

4.8.4 Blyth PS and Hullett Central PS were involved in an accommodation review during the 2008/2009 school year. The result of that review has seen Blyth PS students attending Hullett Central PS or Maitland River Elementary School. Holmesville PS closed at the end of June 2013 as a result of a 2011/2012 accommodation review. Students from the Holmesville PS area now attend Huron Centennial PS, Clinton PS, Goderich PS or Goderich DCI - Elementary.

4.8.5 The enrolment at Clinton PS is projected to remain stable over the next five (5) to seven (7) years with a slight decline towards the end of the 15-year projection. Clinton is the site of a community hub involving a partnership with the County of Huron's Early Years program. We continue to see pressure on space at this site considering the use of space for two Childcare programs as well as the section class in a relatively full building. Staff continue to monitor the issue.

4.8.6 The enrolment at Seaforth PS is projected to be stable over the fifteen (15) year projection. The loading at this site is projected to stay close to 75%.

4.8.7 The enrolment at Huron Centennial PS is projected to remain relatively stable over the next ten (10) years with the school projected to sustain an 80%, or better, loading at the end of that time frame.

4.8.8 Hullett Central PS is projected to have a stable enrolment over the next ten (10) years which indicates the school will remain at or over its built capacity, with some increase projected at the end of the fifteen (15) year time frame. There is currently 1 portable on site for use as a standard classroom.

4.8.9 Central Huron SS is projected to have some fluctuation in enrolment over the next ten (10) years, but it is anticipated the enrolment will end that timeframe around 450 students. This is slightly lower than the previous projection indicated.

#### 4.9 North West Huron Area

4.9.1 Table 20 shows the historic enrolment trends for Brookside PS, Colborne Central PS, Goderich DCI - Elementary, Goderich PS and Goderich DCI.

Table 20: Historical Enrolments, North West Huron Area

School	Current -6 2010/ 2011	Current -5 2011/ 2012	Current -4 2012/ 2013	Current -3 2013/ 2014	Current -2 2014/ 2015	Current -1 2015/ 2016	Current 2016/ 2017	% Change 2010 to 2016
Brookside Public School	204	201	183	204	185	190	192	-5.8%
GDCI - Elementary	117	109	121	162	146	130	132	12.8%
Goderich Public School	373	389	403	489	479	503	512	37.3%
Goderich District Collegiate Institute	576	565	572	526	512	481	447	-22.4%
Colborne Central Public School (Closed)	181	153	129					n/a

Note: Historical enrolment trends for some sites have been affected by accommodation changes. Brookside PS and Goderich PS affected by the closure of Colborne Central PS and Holmesville PS in 2013/2014.

4.9.2 Table 21 shows the projected enrolments for the North West Huron area

Table 21: Projected Enrolments, North West Huron Area

School	Current 2016/ 2017	Year 1 2017/ 2018	Year 2 2018/ 2019	Year 3 2019/ 2020	Year 4 2020/ 2021	Year 5 2021/ 2022	Year 6 2022/ 2023	Year 7 2023/ 2024	Year 8 2024/ 2025	Year 9 2025/ 2026	Year 10 2026/ 2027
Brookside Public School	192	212	205	209	218	216	220	217	223	219	219
GDCI - Elementary	132	156	144	142	151	146	134	137	125	129	164
Goderich Public School	512	510	530	527	531	526	531	525	542	534	519
Goderich District Collegiate Institute	447	413	396	394	390	403	409	398	398	399	377

4.9.3 Table 22 shows the school rated capacities, enrolments, and loadings for the 2016/2017 school year.

Table 22: School Rated Capacity, Enrolment Projections, Loadings, North West Huron Area

School	SFIS Rated Capacity 2017-18 (OTG)	Enrolment Projection Students 2017-18	% Loading 2017-18
Brookside Public School	305	212	69.5%
Goderich Public School	554	510	92.1%
GDCI – Elementary	138	156	113.0%
Goderich District Collegiate Institute	684	413	60.4%
Goderich District Collegiate Institute 7-12 Consolidated Capacity	822	569	69.2%

4.9.4 This area underwent an accommodation review in the 2011/2012 school year resulting in the closure of Holmesville PS and Colborne Central PS effective July 2013. The boundaries for Brookside PS, Clinton PS, Huron Centennial PS and the Goderich schools have been adjusted to accommodate the students from the closed schools.

4.9.5 The boundaries for Goderich DCI and Central Huron SS were also adjusted to align with the more recently established elementary boundaries.

4.9.6 Brookside PS enrolment is projected to have a slight increase in the five (5) to ten (10) year period, up by approximately 14% at the end of ten (10) years.

4.9.7 Goderich PS had been projected to have a slight decline over the next ten (10) years. New data, however, indicates an upward trend gaining 30 students before the end of the ten (10) year period, when it begins to drop off over the following five (5) years.

4.9.8 Goderich DCI enrolment is projected to decline by approximately 100 students in the ten (10) to eleven (11) year timeframe before trending up to its current enrolment levels at the end of the fifteen (15) year projection.



#### 4.10 South Huron Area

4.10.1 Table 23 shows the historic enrolment trends for Bluewater Coast ES (formerly Hensall PS), Exeter PS, Stephen Central PS, Osborne Central PS, Zurich PS and South Huron DHS.

Table 23: Historical Enrolments, South Huron Area

School	Current -6 2010/ 2011	Current -5 2011/ 2012	Current -4 2012/ 2013	Current -3 2013/ 2014	Current -2 2014/ 2015	Current -1 2015/ 2016	Current 2016/ 2017	% Change 2010 to 2016
Bluewater Coast Elementary School	159	149	147	132	144	136	123	-22.9%
Exeter Elementary School	320	343	320	340	324	326	310	-3.1%
South Huron Elementary School			158	141	150	154	154	n/a
Stephen Central Public School	164	151	189	183	188	193	197	19.8%
South Huron District High School	730	695	657	599	534	465	428	-41.4%
Osborne Central Public School (Closed)	109	99						n/a
Zurich Public School (Closed)	124	109						n/a

Note: Historical enrolment trends for some sites have been affected by accommodation changes. Exeter PS was affected by the closure of Osborne PS in 2012/2013. Bluewater Coast ES and Stephen Central PS were affected by the closure of Zurich PS in 2012/2013.

4.10.2 Table 24 shows the projected enrolments for the South Huron area.

Table 24: Projected Enrolments, South Huron Area

School	Current 2016/ 2017	Year 1 2017/ 2018	Year 2 2018/ 2019	Year 3 2019/ 2020	Year 4 2020/ 2021	Year 5 2021/ 2022	Year 6 2022/ 2023	Year 7 2023/ 2024	Year 8 2024/ 2025	Year 9 2025/ 2026	Year 10 2026/ 2027
Bluewater Coast Elementary School	123	129	120	115	105	107	111	114	118	116	116
Exeter Elementary School	310	314	304	298	298	294	294	292	300	294	291
South Huron Elementary School	154	172	172	157	165	167	145	132	130	137	150
Stephen Central Public School	197	187	189	196	199	190	195	195	193	197	196
South Huron District High School	428	400	405	440	443	448	459	438	423	411	379

4.10.3 Table 25 shows the school rated capacities, enrolments, and loadings for the 2016/2017 school year.

Table 25: School Rated Capacity, Enrolment Projections, Loadings, South Huron Area

School	SFIS Rated Capacity 2016-17 (OTG)	Enrolment Projection Students 2016-17	% Loading 2016-17
Bluewater Coast Elementary School	317	129	40.7%
Exeter Elementary School	456	314	68.9%
Stephen Central Public School	259	187	72.2%
South Huron Elementary School	184	172	93.5%
South Huron District High School	870	400	46.0%
South Huron District High School 7-12 Consolidated Capacity	1054	572	54.3%

4.10.4 An accommodation review, including all of the schools in this area, was completed during the 2009/2010 school year. As a result of that review, Usborne Central PS and Zurich PS closed as of July 2012 and the Grade 7 and 8 students from all of the schools were accommodated at the South Huron DHS building. Exeter ES, Stephen Central PS and Bluewater Coast ES remain open as JK-6 schools to accommodate the students from the five (5) schools that were reviewed.

4.10.5 We continue to monitor Bluewater Coast ES enrolment, which is currently projected to decline further in the ten (10) year timeframe, with a slight upward trend at the end of the fifteen (15) year projection. However, utilization is still expected to remain under 50%. The 2016/19 utilization is 40.7%, up from last year's 38.8%.

4.10.6 Exeter ES enrolment is projected to decline slightly (less than 10%) over the next ten (10) years while Stephen Central PS enrolments should remain stable at approximately 190 students.

4.10.7 Enrolments at South Huron DHS - Elementary are projected to increase slightly over the next approximate five (5) years and then decrease and stabilize slightly lower than previously projected at between 130 and 150 students.

4.10.7 South Huron DHS enrolment is expected to decline to the low 400s in the near term then increase to the mid-400s at the end of five (5) years. Beyond eight (8) years the enrolment is projected to decline, possibly below 400 students.

#### 4.11 North East Huron Area

4.11.1 Table 26 shows the historic enrolment trends for Brussels PS, East Wawanosh PS, Howick Central PS, Turnberry Central PS, Wingham PS and FE Madill SS.

Table 26: Historical Enrolments, North East Huron Area

School	Current -6 2010/ 2011	Current -5 2011/ 2012	Current -4 2012/ 2013	Current -3 2013/ 2014	Current -2 2014/ 2015	Current -1 2015/ 2016	Current 2016/ 2017	% Change 2010 to 2016
FE Madill - Elementary School			161	154	146	156	149	n/a
Howick Central Public School	293	313	319	331	344	341	343	17.0%
Maitland River Elementary School			468	468	465	484	481	n/a
FE Madill Secondary School	900	843	773	759	728	698	671	-25.4%
Brussels Public School (Closed)	200	182						n/a
East Wawanosh Public School (Closed)	144	132						n/a
Turnberry Public School (Closed)	133	141						n/a
Wingham Public School (Closed)	281	239						n/a

Note: Historical enrolment trends for some sites have been affected by accommodation changes. FE Madill Elementary and Maitland River ES were affected by closures of Turnberry PS, Wingham PS, and Brussels PS in 2012/2013.

4.11.2 Table 27 shows the projected enrolments for the North East Huron area.

Table 27: Projected Enrolments, North East Huron Area

School	Current 2016/ 2017	Year 1 2017/ 2018	Year 2 2018/ 2019	Year 3 2019/ 2020	Year 4 2020/ 2021	Year 5 2021/ 2022	Year 6 2022/ 2023	Year 7 2023/ 2024	Year 8 2024/ 2025	Year 9 2025/ 2026	Year 10 2026/ 2027
FE Madill - Elementary School	149	154	159	138	128	151	152	149	138	140	155
Howick Central Public School	343	343	359	351	352	346	352	336	339	335	344
Maitland River Elementary School	481	460	482	511	509	505	513	512	528	525	523
FE Madill Secondary School	671	631	611	609	636	600	605	613	575	596	596

4.11.3 Table 25 shows the school rated capacities, enrolments, and loadings for the 2016/2017 school year.

Table 28: School Rated Capacity, Enrolment Projections, Loadings, North East Huron Area

School	SFIS Rated Capacity 2017-18 (OTG)	Enrolment Projection Students 2017-18	% Loading 2017-18
Howick Central Public School	420	343	81.7%
Maitland River Elementary School	534	460	86.1%
FE Madill - Elementary School	161	154	95.7%
F.E. Madill Secondary School	1041	631	60.6%
F.E. Madill Secondary School 7-12 Consolidated Capacity	1202	785	65.3%

4.11.4 All of the schools in this planning area except Howick Central PS were involved in an accommodation review during the 2008/2009 school year.

4.11.5 The reviewed schools closed effective September 2012; a newly configured K-6 school was established and the Grade 7 and 8 students were accommodated at FE Madill SS for the 2012/2013 school year. The newly constructed Maitland River ES opened its doors in September 2013.

4.11.6 Howick Central PS is projected to be stable over the ten (10) year time frame with slight decline by the end of the fifteen (15) year projection. The elementary enrolment at FE Madill SS is projected to remain relatively stable going forward.

4.11.7 The enrolment at Maitland River ES is projected to increase by approximately 40 students over the next ten (10) years.

4.11.8 The secondary enrolment at FE Madill SS is projected to decline by approximately 70 students over the same timeframe. Projected beyond the fifteen (15) year period, it is expected FE Madill would trend upward reflecting some of the increases in the elementary panel indicated in this projection.

**5.0 Other Considerations Regarding Accommodation Reviews**

5.1 What happens in one area during an accommodation review may have an impact on neighboring schools. As such, Accommodation Review Committees (ARCs) established by the Board, now or in the future, should be sensitive to this fact and may want to seek input from other school communities as part of their deliberations.

- 5.2 The Board should consider its financial capacity to deal with a number of reviews in any one year and sets of recommendations at one time. As there is a general commitment that a review will not be conducted in an area more than once every five (5) years, it would be unfortunate to put any community through a process that in the end left it without a decision. However, it is also possible for the Board to conduct a review and make a decision that is implemented sometime in the future.
- 5.3 As staff go forward with the annual review process, they will continue to look at:
- schools with low and declining enrolments,
  - schools with low overall enrolments in the absolute,
  - schools that present extreme costs for renovation and operation,
  - schools that demonstrate challenges, due to their overall small size, for the delivery of quality program.
- 5.4 Accessibility issues will continue to be monitored going forward. At times, significant accessibility issues require consideration related to school accommodation reviews. The recently announced Ministry funding, augmented with board funds, provides us the opportunity to address the conundrum that is Stratford Central SS, addressing both infrastructure and accessibility requirements.

## 6.0 Next Steps

- 6.1 Program considerations with respect to Grade 7/8 in concert with facility condition, low enrolments and loadings in some schools in and around Stratford continue to be monitored. The renovations scheduled at Stratford Central School and the potential reconfiguration of programming at the Stratford Central and Stratford Northwestern Schools will need to be completed before staff can determine what further review may be necessary for the Stratford area.
- 6.2 Low enrolment and loading at North Easthope PS continues to be a concern. Additionally, Central Perth PS is a concern with continued low and declining enrolment.
- 6.3 The enrolment pressure at Little Falls PS and the continued low and declining enrolment at South Perth Centennial PS also present accommodation and programming concerns over the next ten (10) years. Staff believes that if there is a continuation of both enrolment pressures and enrolment decline at these respective schools, this area should be considered for an in-depth review.
- 6.4 Enrolment pressures at both Clinton PS and Hullett Central PS will need to be monitored going forward. In addition, interest has been expressed regarding expansion of the child care program at Clinton PS and Seaforth PS.
- 6.5 If the two-fold pressure of enrolment at Clinton and Hullett plus the interest in expanding child care is sustained, consideration of a Grade 7-12 model at Central Huron SS may be recommended to alleviate the pressure at both sites. The 7-12 model has proven effective at seven (7) other secondary sites in the district.
- 6.6 The Ministry of Education expects excess space at sites nearby be considered before new capital additions are approved. It would therefore be difficult to get Capital Priorities funding to support an addition at either Hullett PS or Clinton PS without considering excess space at other sites such as Central Huron SS.

- 6.7 Low enrolment at Bluewater Coast continues to present a challenge and will be monitored closely.
- 6.8 Staff continues to explore partnerships and alternate use of empty space in each of our schools in an effort to sustain the viability of vulnerable schools. In rural areas, municipalities are likely the best, if not only, partnership opportunity. Board staff will continue to explore these possibilities through our annual municipal partnership meetings that provide opportunities for exploration, as well as discussions that have occurred regarding shared library space.
- 6.9 Staff will continue to explore innovative approaches to program delivery at our secondary schools to sustain the quality of the secondary school experience for our students as enrolment declines.

## **7.0 Recommendations**

While staff is not recommending any schools for further review at this time, the Board may choose to pass a motion to place a school or group of schools under review.

Janet Baird-Jackson  
Superintendent of Corporate Services

Dr. Lisa Walsh  
Director of Education and  
Secretary of the Board

## Total Projected Enrolment By School PA01: Stratford Area (SNSS/SCSS)

School Name	On-The-Ground Capacity	Historical 2007/2008	Historical 2008/2009	Historical 2009/2010	Historical 2010/2011	Historical 2011/2012	Historical 2012/2013	Historical 2013/2014	Historical 2014/2015	Historical 2015/2016	Current 2016/2017	Year 1 2017/2018	Year 2 2018/2019	Year 3 2019/2020	Year 4 2020/2021	Year 5 2021/2022	Year 6 2022/2023	Year 7 2023/2024	Year 8 2024/2025	Year 9 2025/2026	Year 10 2026/2027	Year 11 2027/2028	Year 12 2028/2029	Year 13 2029/2030	Year 14 2030/2031
Anne Hathaway Public School	542.0	468	444	411	412	374	364	392	385	390	390	396	420	433	430	428	419	430	426	430	427	432	429	429	431
Avon Public School*	377.0	276	256	264	253	272	287	287	310	304	323	320	357	361	356	359	362	364	366	374	380	389	400	407	414
Bedford Public School	449.0	384	403	453	464	495	462	387	414	425	440	452	437	429	437	446	450	459	462	456	464	469	468	469	470
Central Perth Elementary School	371.0	285	290	273	259	247	238	237	233	217	233	219	213	212	198	190	182	187	186	186	187	191	193	193	200
Downie Central Public School*	268.0	287	290	290	282	270	275	272	280	271	261	243	214	204	201	197	191	188	188	194	200	201	200	202	204
Hamlet Public School	305.0	251	248	233	244	218	224	217	206	194	184	189	184	171	163	159	157	165	163	165	168	169	173	173	173
Milverton Public School	386.0	259	259	248	258	256	266	277	270	275	296	303	295	293	278	283	275	266	261	261	257	251	246	249	256
North Easthope Public School	268.0	160	158	141	146	159	153	160	152	151	158	164	163	160	150	147	142	135	137	137	136	134	136	136	137
Romeo Public School	233.0	164	143	135	131	134	143	160	158	145	144	140	132	132	127	121	121	122	124	126	125	124	123	123	123
Shakespeare Public School	282.0	200	218	221	207	197	202	197	186	186	184	187	185	185	188	185	185	182	182	189	187	194	193	192	192
Sprucedale Public School	236.0	228	231	221	221	214	213	204	213	213	203	205	190	192	189	190	189	187	186	179	177	184	190	197	200
Stratford Central Public School	322.0	285	295	282	275	277	278	299	309	302	311	290	297	293	299	307	307	283	276	287	281	276	276	289	289
Stratford Northwestern Public School	161.0	255	234	200	234	207	155	184	206	167	156	159	169	180	182	190	190	185	186	191	193	194	195	202	207
<b>TOTAL PUPILS (Existing + New)</b>	<b>4,200.0</b>	<b>3,498</b>	<b>3,469</b>	<b>3,372</b>	<b>3,386</b>	<b>3,320</b>	<b>3,260</b>	<b>3,273</b>	<b>3,319</b>	<b>3,240</b>	<b>3,283</b>	<b>3,263</b>	<b>3,255</b>	<b>3,245</b>	<b>3,197</b>	<b>3,202</b>	<b>3,171</b>	<b>3,153</b>	<b>3,143</b>	<b>3,174</b>	<b>3,183</b>	<b>3,208</b>	<b>3,223</b>	<b>3,261</b>	<b>3,297</b>

\* Projections for these sites is based on prior year's projections with estimated adjustments to account for boundary adjustments and growth.

## Total Projected Enrolment By School PA02: Central Huron Area (CHSS)

School Name	On-The-Ground Capacity	Historical 2007/2008	Historical 2008/2009	Historical 2009/2010	Historical 2010/2011	Historical 2011/2012	Historical 2012/2013	Historical 2013/2014	Historical 2014/2015	Historical 2015/2016	Current 2016/2017	Year 1 2017/2018	Year 2 2018/2019	Year 3 2019/2020	Year 4 2020/2021	Year 5 2021/2022	Year 6 2022/2023	Year 7 2023/2024	Year 8 2024/2025	Year 9 2025/2026	Year 10 2026/2027	Year 11 2027/2028	Year 12 2028/2029	Year 13 2029/2030	Year 14 2030/2031
Clinton Public School	331.0	257	252	237	239	208	211	276	275	297	296	296	306	302	287	285	281	274	270	271	274	272	265	263	262
Hullett Central Public School	259.0	165	159	155	157	161	265	284	280	282	285	271	272	275	275	281	282	282	289	295	293	308	311	310	323
Huron Centennial Public School	424.0	447	422	404	377	360	341	366	357	327	337	352	332	339	334	330	343	349	348	353	356	357	364	366	366
Seaforth Public School	400.0	355	357	333	318	338	314	297	300	295	306	304	310	308	302	295	297	296	297	297	297	293	292	296	300
Blyth (Closed)		187	187	168	157	154																			
Holmesville (Closed)		161	141	133	129	108	103																		
<b>TOTAL PUPILS (Existing + New)</b>	<b>1,414.0</b>	<b>1,572</b>	<b>1,518</b>	<b>1,430</b>	<b>1,376</b>	<b>1,329</b>	<b>1,234</b>	<b>1,223</b>	<b>1,212</b>	<b>1,201</b>	<b>1,224</b>	<b>1,222</b>	<b>1,221</b>	<b>1,224</b>	<b>1,199</b>	<b>1,191</b>	<b>1,202</b>	<b>1,201</b>	<b>1,204</b>	<b>1,215</b>	<b>1,221</b>	<b>1,232</b>	<b>1,232</b>	<b>1,235</b>	<b>1,251</b>

## Total Projected Enrolment By School PA03: South Perth Area (DVC)

School Name	On-The-Ground Capacity	Historical 2007/2008	Historical 2008/2009	Historical 2009/2010	Historical 2010/2011	Historical 2011/2012	Historical 2012/2013	Historical 2013/2014	Historical 2014/2015	Historical 2015/2016	Current 2016/2017	Year 1 2017/2018	Year 2 2018/2019	Year 3 2019/2020	Year 4 2020/2021	Year 5 2021/2022	Year 6 2022/2023	Year 7 2023/2024	Year 8 2024/2025	Year 9 2025/2026	Year 10 2026/2027	Year 11 2027/2028	Year 12 2028/2029	Year 13 2029/2030	Year 14 2030/2031
Little Falls Public School	498.0				475	480	486	507	503	498	481	462	450	433	427	434	444	449	461	474	490	506	516	529	543
South Perth Public School	337.0	246	232	209	189	177	174	163	158	159	166	156	150	156	154	149	141	139	139	140	138	138	141	134	134
St. Mary's DCVI - Elementary	138.0				88	112	123	120	125	133	129	147	140	130	139	121	114	125	124	119	119	120	130	137	136
Arthur Meighen (Closed)		260	250	260																					
St. Marys Central (Closed)		282	268	282																					
<b>TOTAL PUPILS (Existing + New)</b>	<b>973.0</b>	<b>788</b>	<b>750</b>	<b>751</b>	<b>752</b>	<b>769</b>	<b>783</b>	<b>790</b>	<b>786</b>	<b>790</b>	<b>776</b>	<b>765</b>	<b>739</b>	<b>719</b>	<b>721</b>	<b>703</b>	<b>699</b>	<b>713</b>	<b>724</b>	<b>733</b>	<b>746</b>	<b>764</b>	<b>786</b>	<b>800</b>	<b>813</b>

Note: Projections are based on an update using prior year projections supplemented with 2016/17 actuals and 17/18 preliminary enrolments

**Total Projected Enrolment By School PA04: West Perth Area (MDHS)**

School Name	On-The-Ground Capacity	Historical 2007/2008	Historical 2008/2009	Historical 2009/2010	Historical 2010/2011	Historical 2011/2012	Historical 2012/2013	Historical 2013/2014	Historical 2014/2015	Historical 2015/2016	Current 2016/2017	Year 1 2017/2018	Year 2 2018/2019	Year 3 2019/2020	Year 4 2020/2021	Year 5 2021/2022	Year 6 2022/2023	Year 7 2023/2024	Year 8 2024/2025	Year 9 2025/2026	Year 10 2026/2027	Year 11 2027/2028	Year 12 2028/2029	Year 13 2029/2030	Year 14 2030/2031
Upper Thames Public School	735.0	501	494	477	794	802	799	596	584	571	571	613	554	540	546	550	563	581	584	604	613	627	633	639	646
Mitchell DHS - Elementary	161.0								162	164	137	150	142	142	157	141	134	137	127	134	134	131	137	141	151
Mitchell (Closed)		273	277	294																					
<b>TOTAL PUPILS (Existing + New)</b>	<b>896.0</b>	<b>774</b>	<b>771</b>	<b>771</b>	<b>794</b>	<b>802</b>	<b>799</b>	<b>758</b>	<b>748</b>	<b>708</b>	<b>721</b>	<b>755</b>	<b>697</b>	<b>696</b>	<b>687</b>	<b>684</b>	<b>700</b>	<b>708</b>	<b>719</b>	<b>737</b>	<b>744</b>	<b>764</b>	<b>773</b>	<b>790</b>	<b>799</b>

**Total Projected Enrolment By School PA05: North West Huron Area (GDCI)**

School Name	On-The-Ground Capacity	Historical 2007/2008	Historical 2008/2009	Historical 2009/2010	Historical 2010/2011	Historical 2011/2012	Historical 2012/2013	Historical 2013/2014	Historical 2014/2015	Historical 2015/2016	Current 2016/2017	Year 1 2017/2018	Year 2 2018/2019	Year 3 2019/2020	Year 4 2020/2021	Year 5 2021/2022	Year 6 2022/2023	Year 7 2023/2024	Year 8 2024/2025	Year 9 2025/2026	Year 10 2026/2027	Year 11 2027/2028	Year 12 2028/2029	Year 13 2029/2030	Year 14 2030/2031
Brookside Public School	305.0	214	221	212	204	201	183	204	185	190	192	212	205	209	218	216	220	217	223	219	219	209	195	189	181
Goderich Public School	554.0			380	373	389	403	489	479	503	512	510	530	527	531	526	531	525	542	534	519	516	507	513	519
GDCI - Elementary	138.0			124	117	109	121	162	146	130	132	156	144	142	151	146	134	137	125	129	164	159	152	145	130
Colborne Central (Closed)		181	182	177	181	153	129																		
Robertson (Closed)		252	259																						
Victoria (Closed)		267	240																						
<b>TOTAL PUPILS (Existing + New)</b>	<b>997.0</b>	<b>913</b>	<b>902</b>	<b>893</b>	<b>875</b>	<b>852</b>	<b>836</b>	<b>855</b>	<b>810</b>	<b>823</b>	<b>836</b>	<b>878</b>	<b>879</b>	<b>878</b>	<b>901</b>	<b>889</b>	<b>885</b>	<b>880</b>	<b>890</b>	<b>882</b>	<b>902</b>	<b>884</b>	<b>855</b>	<b>846</b>	<b>830</b>

**Total Projected Enrolment By School PA06: North Perth Area (LDSS)**

Appendix A - Preliminary Accommodation 2016/17

School Name	On-The-Ground Capacity	Historical 2007/2008	Historical 2008/2009	Historical 2009/2010	Historical 2010/2011	Historical 2011/2012	Historical 2012/2013	Historical 2013/2014	Historical 2014/2015	Historical 2015/2016	Current 2016/2017	Year 1 2017/2018	Year 2 2018/2019	Year 3 2019/2020	Year 4 2020/2021	Year 5 2021/2022	Year 6 2022/2023	Year 7 2023/2024	Year 8 2024/2025	Year 9 2025/2026	Year 10 2026/2027	Year 11 2027/2028	Year 12 2028/2029	Year 13 2029/2030	Year 14 2030/2031
Elma Township Public School	478.0	507	478	452	450	426	431	438	441	385	345	344	323	330	317	321	329	327	338	336	348	347	361	368	376
Listowel Eastdale Public School	285.0	226	233	226	231	229	239	253	249	252	286	285	293	302	292	302	307	319	320	334	345	352	369	376	383
Mornington Central Public School	199.0	162	156	169	182	175	153	141	148	116	131	171	186	182	180	183	179	177	173	167	166	149	150	146	
North Perth Westfield Elementary School (Open effective 2016/17)	629.0										546	571	577	578	579	568	573	576	577	583	584	599	605	613	638
North Woods Elementary School	259.0	212	198	196	163	144	185	204	186	161	168	166	154	153	159	156	159	158	162	167	171	176	180	182	
Listowel Central Public School (Closed effective 2016/17)		370	365	362	355	364	376	376	386	394															
Wallace Public School (Closed effective 2016/17)		248	241	232	238	231	213	191	175	151															
<b>TOTAL PUPILS (Existing + New)</b>	<b>1,850.0</b>	<b>1,723</b>	<b>1,671</b>	<b>1,637</b>	<b>1,618</b>	<b>1,569</b>	<b>1,597</b>	<b>1,603</b>	<b>1,585</b>	<b>1,459</b>	<b>1,476</b>	<b>1,536</b>	<b>1,532</b>	<b>1,545</b>	<b>1,527</b>	<b>1,531</b>	<b>1,546</b>	<b>1,557</b>	<b>1,571</b>	<b>1,586</b>	<b>1,614</b>	<b>1,623</b>	<b>1,665</b>	<b>1,688</b>	<b>1,726</b>

Note: Projections are based on an update using prior year projections supplemented with 2016/17 actuals and 17/18 preliminary enrolments



**Total Projected Enrolment By School PA07: South Huron Area (SHDHS)**

School Name	On-The-Ground Capacity	Historical 2007/2008	Historical 2008/2009	Historical 2009/2010	Historical 2010/2011	Historical 2011/2012	Historical 2012/2013	Historical 2013/2014	Historical 2014/2015	Historical 2015/2016	Current 2016/2017	Year 1 2017/2018	Year 2 2018/2019	Year 3 2019/2020	Year 4 2020/2021	Year 5 2021/2022	Year 6 2022/2023	Year 7 2023/2024	Year 8 2024/2025	Year 9 2025/2026	Year 10 2026/2027	Year 11 2027/2028	Year 12 2028/2029	Year 13 2029/2030	Year 14 2030/2031
Bluewater Coast Elementary School	317.0	166	162	157	159	149	147	132	144	136	123	129	120	115	105	107	111	114	118	116	116	118	121	122	124
Exeter Elementary School	456.0	353	339	322	320	343	320	340	324	326	310	314	304	298	298	294	294	292	300	294	291	290	286	287	288
Stephen Central Public School	259.0	210	187	162	164	151	189	183	188	193	197	187	189	196	199	190	195	195	193	197	196	192	187	187	187
South Huron Elementary School	184.0						158	141	150	154	154	172	172	157	165	167	145	132	130	137	150	148	151	146	137
Usborne Central (Closed)		137	129	124	109	99																			
Zurich (Closed)		167	161	142	124	109																			
<b>TOTAL PUPILS (Existing + New)</b>	<b>1,216.0</b>	<b>1,033</b>	<b>978</b>	<b>907</b>	<b>877</b>	<b>851</b>	<b>814</b>	<b>796</b>	<b>806</b>	<b>809</b>	<b>784</b>	<b>801</b>	<b>785</b>	<b>766</b>	<b>767</b>	<b>759</b>	<b>745</b>	<b>734</b>	<b>742</b>	<b>743</b>	<b>753</b>	<b>748</b>	<b>745</b>	<b>742</b>	<b>737</b>

**Total Projected Enrolment By School PA08: North East Huron Area (FEMSS)**

School Name	On-The-Ground Capacity	Historical 2007/2008	Historical 2008/2009	Historical 2009/2010	Historical 2010/2011	Historical 2011/2012	Historical 2012/2013	Historical 2013/2014	Historical 2014/2015	Historical 2015/2016	Current 2016/2017	Year 1 2017/2018	Year 2 2018/2019	Year 3 2019/2020	Year 4 2020/2021	Year 5 2021/2022	Year 6 2022/2023	Year 7 2023/2024	Year 8 2024/2025	Year 9 2025/2026	Year 10 2026/2027	Year 11 2027/2028	Year 12 2028/2029	Year 13 2029/2030	Year 14 2030/2031
Howick Central Public School	420.0	318	306	299	293	313	319	331	344	341	343	343	359	351	352	346	352	336	339	335	344	338	326	325	318
Maitland River Elementary School	534.0						468	468	465	484	481	460	482	511	509	505	513	512	528	525	523	511	514	516	519
FE Madill - Elementary School	161.0						161	154	146	156	149	154	159	138	128	151	152	149	138	140	155	162	157	146	148
Brussels (Closed)	-	217	214	216	200	182																			
East Wawanosh (Closed)	-	169	167	152	144	132																			
Turnberry Central (Closed)	-	138	120	141	133	141																			
Wingham (Closed)	-	243	256	263	281	239																			
<b>TOTAL PUPILS (Existing + New)</b>	<b>1,115.0</b>	<b>1,084</b>	<b>1,063</b>	<b>1,071</b>	<b>1,050</b>	<b>1,007</b>	<b>948</b>	<b>953</b>	<b>955</b>	<b>981</b>	<b>973</b>	<b>956</b>	<b>1,000</b>	<b>1,000</b>	<b>990</b>	<b>1,002</b>	<b>1,017</b>	<b>997</b>	<b>1,006</b>	<b>1,000</b>	<b>1,022</b>	<b>1,011</b>	<b>997</b>	<b>987</b>	<b>985</b>

**Total Secondary - Projected Enrolment By School**

School Name	On-The-Ground Capacity	Historical 2007/2008	Historical 2008/2009	Historical 2009/2010	Historical 2010/2011	Historical 2011/2012	Historical 2012/2013	Historical 2013/2014	Historical 2014/2015	Historical 2015/2016	Current 2016/2017	Year 1 2017/2018	Year 2 2018/2019	Year 3 2019/2020	Year 4 2020/2021	Year 5 2021/2022	Year 6 2022/2023	Year 7 2023/2024	Year 8 2024/2025	Year 9 2025/2026	Year 10 2026/2027	Year 11 2027/2028	Year 12 2028/2029	Year 13 2029/2030	Year 14 2030/2031
Stratford Central Secondary School	777.0	686	722	729	790	807	812	805	793	789	803	784	845	801	811	777	782	792	795	779	760	752	728	741	733
Stratford Northwestern Secondary School	1,281.0	963	965	941	999	945	947	937	904	902	872	784	808	757	749	790	785	797	777	774	746	737	715	709	691
Central Huron Secondary School	879.0	587	616	614	646	600	610	568	565	530	490	461	441	445	464	477	472	484	469	450	449	439	438	447	441
St. Marys District Collegiate and Vocational Institute	651.0	547	565	548	571	512	470	464	446	434	448	421	434	473	458	451	472	432	433	420	391	394	389	389	394
Mitchell District High School	495.0	425	419	422	427	384	374	338	323	314	292	300	308	283	295	298	282	292	280	264	271	262	264	270	268
Goderich District Collegiate Institute	663.0	594	563	554	576	565	572	526	512	481	447	413	396	394	390	403	409	398	398	399	377	385	428	419	472
Listowel District Secondary School	1,200.0	1,114	1,093	1,069	1,044	1,005	976	920	904	864	887	875	880	875	845	847	834	862	853	835	841	846	819	816	812
South Huron District High School	870.0	806	783	767	730	695	657	599	534	465	428	400	405	440	443	448	459	438	423	411	379	368	383	388	412
F.E. Madill Secondary School	1,020.0	921	900	875	900	843	773	759	728	698	671	631	611	609	636	600	605	613	575	596	596	570	610	601	655
<b>TOTAL PUPILS (Existing + New)</b>	<b>7,836.0</b>	<b>6,643</b>	<b>6,626</b>	<b>6,519</b>	<b>6,683</b>	<b>6,356</b>	<b>6,191</b>	<b>5,916</b>	<b>5,709</b>	<b>5,477</b>	<b>5,338</b>	<b>5,068</b>	<b>5,128</b>	<b>5,077</b>	<b>5,090</b>	<b>5,090</b>	<b>5,101</b>	<b>5,107</b>	<b>5,002</b>	<b>4,927</b>	<b>4,810</b>	<b>4,752</b>	<b>4,774</b>	<b>4,780</b>	<b>4,878</b>

Note: Projections are based on an update using prior year projections supplemented with 2016/17 actuals and 17/18 preliminary enrolments

## Appendix B1 - Preliminary Accommodation 2017/18

### 2016-17 Enrolments, School Capacities & Loadings Schools Sorted Alphabetically

Elementary	SFIS Rated Capacity 2017-18 (OTG)	Enrolment Projection Students 2017-18	% Loading 2017-18
Anne Hathaway Public School	542	396	73.1%
Avon Public School	377	320	84.9%
Bedford Public School	449	452	100.7%
Bluewater Coast Elementary School	317	129	40.7%
Brookside Public School	305	212	69.5%
Central Perth Elementary School	371	219	59.0%
Clinton Public School	305	296	97.0%
Downie Central Public School	268	243	90.7%
Elma Township Public School	478	344	72.0%
Exeter Elementary School	456	314	68.9%
FE Madill - Elementary School	161	154	95.7%
GDCI - Elementary	138	156	113.0%
Goderich Public School	554	510	92.1%
Hamlet Public School	305	189	62.0%
Howick Central Public School	420	343	81.7%
Hullett Central Public School	259	271	104.6%
Huron Centennial Public School	424	352	83.0%
Listowel Eastdale Public School	285	285	100.0%
Little Falls Public School	498	462	92.8%
Maitland River Elementary School	534	460	86.1%
Milverton Public School	386	303	78.5%
Mitchell District HS - Elementary	161	142	88.2%
Mornington Central Public School	199	171	85.9%
North Easthope Public School	268	164	61.2%
North Perth Westfield Elementary School	629	571	90.8%
North Woods Elementary School	259	166	64.1%
Romeo Public School	233	140	60.1%
Seaforth Public School	400	304	76.0%
Shakespeare Public School	282	187	66.3%
South Huron Elementary School	184	172	93.5%
South Perth Centennial Public School	337	156	46.3%
Sprucedale Public School	236	205	86.9%
St. Mary's DCVI - Elementary	138	147	106.5%
Stephen Central Public School	259	187	72.2%
Stratford Central Public School	322	290	90.1%
Stratford Northwestern Public School	161	159	98.8%
Upper Thames Public School	735	613	83.4%

Secondary	SFIS Rated Capacity 2017-18 (OTG)	Enrolment Projection Students 2017-18	% Loading 2017-18
Central Huron Secondary School	879	461	52.4%
F.E. Madill Secondary School	1041	631	60.6%
Goderich District Collegiate Institute	684	413	60.4%
Listowel District Secondary School	1200	875	72.9%
Mitchell District High School	495	300	60.6%
South Huron District High School	870	400	46.0%
St. Marys D.C. & V.I.	651	421	64.7%
Stratford Central Secondary School	777	784	100.9%
Stratford Northwestern Secondary School	1251	784	62.7%

## Appendix B2.1 - Preliminary Accommodation 2017/18

### 2016-17 Enrolments, School Capacities & Loadings Schools Sorted by Enrolment

Elementary	SFIS Rated Capacity 2017-18 (OTG)	Enrolment Projection Students 2017-18	% Loading 2017-18
Bluewater Coast Elementary School	317	129	40.7%
St. Mary's DCVI - Elementary	138	147	106.5%
Mornington Central Public School	199	171	85.9%
GDCI - Elementary	138	156	113.0%
Romeo Public School	233	140	60.1%
FE Madill - Elementary School	161	154	95.7%
Mitchell District HS - Elementary	161	142	88.2%
South Huron Elementary School	184	172	93.5%
Stratford Northwestern Public School	161	159	98.8%
North Easthope Public School	268	164	61.2%
South Perth Centennial Public School	337	156	46.3%
North Woods Elementary School	259	166	64.1%
Hamlet Public School	305	189	62.0%
Shakespeare Public School	282	187	66.3%
Brookside Public School	305	212	69.5%
Stephen Central Public School	259	187	72.2%
Sprucedale Public School	236	205	86.9%
Central Perth Elementary School	371	219	59.0%
Downie Central Public School	268	243	90.7%
Hullett Central Public School	259	271	104.6%
Listowel Eastdale Public School	285	285	100.0%
Clinton Public School	305	296	97.0%
Milverton Public School	386	303	78.5%
Seaforth Public School	400	304	76.0%
Exeter Elementary School	456	314	68.9%
Stratford Central Public School	322	290	90.1%
Avon Public School	377	320	84.9%
Huron Centennial Public School	424	352	83.0%
Howick Central Public School	420	343	81.7%
Elma Township Public School	478	344	72.0%
Anne Hathaway Public School	542	396	73.1%
Bedford Public School	449	452	100.7%
Little Falls Public School	498	462	92.8%
Maitland River Elementary School	534	460	86.1%
Goderich Public School	554	510	92.1%
North Perth Westfield Elementary School	629	571	90.8%
Upper Thames Public School	735	613	83.4%

Secondary	SFIS Rated Capacity 2017-18 (OTG)	Enrolment Projection Students 2017-18	% Loading 2017-18
Mitchell District High School	495	300	60.6%
South Huron District High School	870	400	46.0%
Goderich District Collegiate Institute	684	413	60.4%
St. Marys D.C. & V.I.	651	421	64.7%
Central Huron Secondary School	879	461	52.4%
F.E. Madill Secondary School	1041	631	60.6%
Stratford Central Secondary School	777	784	100.9%
Stratford Northwestern Secondary School	1251	784	62.7%
Listowel District Secondary School	1200	875	72.9%

**Appendix B2.2 - Preliminary Accommodation 2017/18**  
 2016-17 Enrolments, School Capacities & Loadings  
 Schools Sorted by Enrolment

Elementary	SFIS Rated Capacity 2017-18 (OTG)	Enrolment Projection Students 2017-18	% Loading 2017-18
<b>K-6 Configuration</b>			
Bluewater Coast Elementary School	317	129	40.7%
Romeo Public School	233	140	60.1%
North Woods Elementary School	259	166	64.1%
Hamlet Public School	305	189	62.0%
Shakespeare Public School	282	187	66.3%
Stephen Central Public School	259	187	72.2%
Listowel Eastdale Public School	285	285	100.0%
Exeter Elementary School	456	314	68.9%
Avon Public School	377	320	84.9%
Anne Hathaway Public School	542	396	73.1%
Bedford Public School	449	452	100.7%
Little Falls Public School	498	462	92.8%
Maitland River Elementary School	534	460	86.1%
Goderich Public School	554	510	92.1%
Upper Thames Public School	735	613	83.4%
<b>K-8 Configuration</b>			
Mornington Central Public School	199	171	85.9%
North Easthope Public School	268	164	61.2%
South Perth Centennial Public School	337	156	46.3%
Brookside Public School	305	212	69.5%
Sprucedale Public School	236	205	86.9%
Central Perth Elementary School	371	219	59.0%
Downie Central Public School	268	243	90.7%
Hullett Central Public School	259	271	104.6%
Clinton Public School	305	296	97.0%
Milverton Public School	386	303	78.5%
Seaforth Public School	400	304	76.0%
Huron Centennial Public School	424	352	83.0%
Howick Central Public School	420	343	81.7%
Elma Township Public School	478	344	72.0%
North Perth Westfield Elementary School	629	571	90.8%
<b>7/8 Configuration (located in a 7-12 site)</b>			
St. Mary's DCVI - Elementary	138	147	106.5%
GDCI - Elementary	138	156	113.0%
FE Madill - Elementary School	161	154	95.7%
Mitchell District HS - Elementary	161	142	88.2%
South Huron Elementary School	184	172	93.5%
Stratford Northwestern Public School	161	159	98.8%
Stratford Central Public School	322	290	90.1%
<b>Secondary</b>			
<b>9-12 Configuration (located at a 7-12 site)</b>			
Mitchell District High School	495	300	60.6%
South Huron District High School	870	400	46.0%
Goderich District Collegiate Institute	684	413	60.4%
St. Marys D.C. & V.I.	651	421	64.7%
F.E. Madill Secondary School	1041	631	60.6%
Stratford Central Secondary School	777	784	100.9%
Stratford Northwestern Secondary School	1251	784	62.7%
<b>9-12 Configuration (located at a 7-12 site)</b>			
Central Huron Secondary School	879	461	52.4%
Listowel District Secondary School	1200	875	72.9%

### Appendix B3 - Preliminary Accommodation 2017/18

#### 2016-17 Enrolments, School Capacities & Loadings Schools Sorted by % Loading

Elementary	SFIS Rated Capacity 2017-18 (OTG)	Enrolment Projection Students 2017-18	% Loading 2017-18
Bluewater Coast Elementary School	317	129	40.7%
South Perth Centennial Public School	337	156	46.3%
North Easthope Public School	268	164	61.2%
Hamlet Public School	305	189	62.0%
Romeo Public School	233	140	60.1%
Central Perth Elementary School	371	219	59.0%
Brookside Public School	305	212	69.5%
North Woods Elementary School	259	166	64.1%
Shakespeare Public School	282	187	66.3%
Mornington Central Public School	199	171	85.9%
Exeter Elementary School	456	314	68.9%
Anne Hathaway Public School	542	396	73.1%
Elma Township Public School	478	344	72.0%
Stephen Central Public School	259	187	72.2%
Seaforth Public School	400	304	76.0%
Milverton Public School	386	303	78.5%
Upper Thames Public School	735	613	83.4%
Huron Centennial Public School	424	352	83.0%
Howick Central Public School	420	343	81.7%
South Huron Elementary School	184	172	93.5%
Avon Public School	377	320	84.9%
Sprucedale Public School	236	205	86.9%
North Perth Westfield Elementary School	629	571	90.8%
Clinton Public School	305	296	97.0%
Maitland River Elementary School	534	460	86.1%
Goderich Public School	554	510	92.1%
FE Madill - Elementary School	161	154	95.7%
Mitchell District HS - Elementary	161	142	88.2%
St. Mary's DCVI - Elementary	138	147	106.5%
GDCI - Elementary	138	156	113.0%
Stratford Central Public School	322	290	90.1%
Little Falls Public School	498	462	92.8%
Stratford Northwestern Public School	161	159	98.8%
Downie Central Public School	268	243	90.7%
Bedford Public School	449	452	100.7%
Listowel Eastdale Public School	285	285	100.0%
Hullett Central Public School	259	271	104.6%

Secondary	SFIS Rated Capacity 2017-18 (OTG)	Enrolment Projection Students 2017-18	% Loading 2017-18
South Huron District High School	870	400	46.0%
Central Huron Secondary School	879	461	52.4%
Mitchell District High School	495	300	60.6%
F.E. Madill Secondary School	1041	631	60.6%
Goderich District Collegiate Institute	684	413	60.4%
Stratford Northwestern Secondary School	1251	784	62.7%
St. Marys D.C. & V.I.	651	421	64.7%
Listowel District Secondary School	1200	875	72.9%
Stratford Central Secondary School	777	784	100.9%

Appendix C - Preliminary Accommodation 2017/18  
5 and 10 Year Enrolment Projection Change by School  
(Sorted Numerically on 5 year compare)

Operating School	5 Year	10 Year
	Both 5 and 10 year compared to year (16/17) (-ve indicates decline)	
Downie Central Public School	-24.41%	-23.52%
Central Perth Elementary School	-18.50%	-19.57%
Romeo Public School	-15.97%	-12.98%
Hamlet Public School	-13.49%	-8.43%
Bluewater Coast Elementary School	-12.65%	-5.74%
FE Madill Secondary School	-10.61%	-11.24%
Mitchell DHS - Elementary	-10.52%	-12.37%
South Perth Public School	-10.24%	-17.13%
Little Falls Public School	-9.84%	1.77%
Goderich District Collegiate Institute	-9.80%	-15.67%
Stratford Northwestern Secondary School	-9.41%	-14.50%
North Easthope Public School	-7.07%	-13.65%
North Woods Elementary School	-7.06%	1.50%
Elma Township Public School	-6.89%	1.00%
St. Mary's DCVI - Elementary	-6.38%	-7.77%
Sprucedale Public School	-6.29%	-12.62%
Exeter Elementary School	-5.14%	-6.05%
Listowel District Secondary School	-4.48%	-5.17%
Milverton Public School	-4.30%	-13.12%
Upper Thames Public School	-3.70%	7.29%
Clinton Public School	-3.65%	-7.34%
Seaforth Public School	-3.54%	-2.85%
Stephen Central Public School	-3.32%	-0.58%
Stratford Central Secondary School	-3.27%	-5.33%
Central Huron Secondary School	-2.73%	-8.28%
Huron Centennial Public School	-2.17%	5.76%
Hullett Central Public School	-1.27%	2.98%
Stratford Central Public School	-1.13%	-9.75%
Shakespeare Public School	0.46%	1.63%
St. Marys D.C. & V.I.	0.62%	-12.79%
Howick Central Public School	0.81%	0.26%
Bedford Public School	1.36%	5.36%
FE Madill - Elementary School	1.64%	4.16%
Mitchell District High School	1.97%	-7.11%
Goderich Public School	2.74%	1.40%
South Huron District High School	4.66%	-11.40%
Maitland River Elementary School	4.99%	8.71%
South Huron Elementary School	8.19%	-2.77%
Anne Hathaway Public School	9.66%	9.52%
GDCI - Elementary	10.85%	24.12%
Avon Public School	11.07%	17.57%
Brookside Public School	12.72%	14.24%
Stratford Northwestern Public School	21.70%	23.82%
Mornington Central Public School	39.88%	26.85%